

RX 70 Technical Data Diesel and LPG Forklift Trucks

[RX 70-20/600](#)

[RX 70-25](#)

[RX 70-30](#)

[RX 70-30 Hybrid](#)

[RX 70-35](#)

[RX 70-35 Hybrid](#)





| | | STILL | STILL | STILL | STILL | STILL | STILL | STILL | STILL | STILL | STILL | STILL | STILL | | |
|----------------------|---|--|-----------------|----------------------------------|---------------------|-----------------------|--------------------|--------------------|--------------------|------------------------|--------------------|--------------------|------------------------|--------------------|--------------------|
| Distinguishing marks | 1.1 | Manufacturer | | | STILL | STILL | STILL | STILL | STILL | STILL | STILL | STILL | STILL | | |
| | 1.2 | Manufacturer's type designation | | | RX 70-20/600 | RX 70-20/600 T | RX 70-25 | RX 70-25 T | RX 70-30 | RX 70-30 H | RX 70-30 T | RX 70-35 | RX 70-35 H | RX 70-35 T | |
| | | Manufacturer model number | | | 7300 | 7306 | 7301 | 7307 | 7302 | 7303 | 7308 | 7304 | 7305 | 7309 | |
| | 1.3 | Drive | | | Diesel | LPG | Diesel | LPG | Diesel | Diesel/Hybrid | LPG | Diesel | Diesel/Hybrid | LPG | |
| | 1.4 | Operation | | | Seated | Seated | Seated | Seated | Seated | Seated | Seated | Seated | Seated | Seated | |
| | 1.5 | Nominal load capacity/load | Q | kg | 2000 | 2000 | 2500 | 2500 | 3000 | 3000 | 3000 | 3500 | 3500 | 3500 | |
| | 1.6 | Load centre distance | c | mm | 600 | 600 | 500 | 500 | 500 | 500 | 500 | 500 | 500 | 500 | |
| | 1.8 | Load spacing | x | mm | 455 | 455 | 455 | 455 | 475 | 475 | 475 | 475 | 475 | 475 | |
| | 1.9 | Wheel base | y | mm | 1760 | 1760 | 1760 | 1760 | 1820 | 1820 | 1820 | 1820 | 1820 | 1820 | |
| Weights | 2.1 | Truck weight incl. battery | | | kg | 3834 | 3834 | 3834 | 3834 | 4168 | 4218 | 4168 | 4460 | 4510 | 4460 |
| | 2.2 | Axle loading, laden | front/rear | | kg | 5628/706 | 5628/706 | 5628/706 | 5628/706 | 6452/716 | 6482/736 | 6452/716 | 7245/715 | 7275/735 | 7245/715 |
| | 2.3 | Axle loading, unladen | front/rear | | kg | 1790/2044 | 1790/2044 | 1790/2044 | 1790/2044 | 1865/2303 | 1875/2343 | 1865/2303 | 1890/2570 | 1900/1610 | 1890/2570 |
| Tyres/chassis | 3.1 | Tyres | | | | Superelastic | Superelastic | Superelastic | Superelastic | Superelastic | Superelastic | Superelastic | Superelastic | Superelastic | |
| | 3.2 | Tyre size | front | | | 23 x 9-10 | 23 x 9-10 | 23 x 9-10 | 23 x 9-10 | 23 x 9-10 | 23 x 9-10 | 23 x 10-12 | 23 x 10-12 | 23 x 10-12 | |
| | 3.3 | Tyre size | rear | | | 21 x 8-9 | 21 x 8-9 | 21 x 8-9 | 21 x 8-9 | 21 x 8-9 | 21 x 8-9 | 21 x 8-9 | 21 x 8-9 | 21 x 8-9 | |
| | 3.5 | Number of wheels (x = driven) | front/rear | | | 2x/2 | 2x/2 | 2x/2 | 2x/2 | 2x/2 | 2x/2 | 2x/2 | 2x/2 | 2x/2 | |
| | 3.6 | Track width | front/rear | b ₁₀ /b ₁₁ | mm | 984/920 | 984/920 | 984/920 | 984/920 | 984/920 | 984/920 | 984/920 | 975/920 | 975/920 | 975/920 |
| | 4.1 | Tilt of mast/fork carriage | forward/back | α/β | ° | 6/7 | 6/7 | 6/7 | 6/7 | 6/7 | 6/7 | 6/7 | 6/7 | 6/7 | 6/7 |
| Dimensions | 4.2 | Height, mast lowered | | h ₁ | mm | 2175 | 2175 | 2175 | 2175 | 2175 | 2175 | 2175 | 2175 | 2175 | 2175 |
| | 4.3 | Free lift | | h ₂ | mm | 160 | 160 | 160 | 160 | 160 | 160 | 160 | 160 | 160 | 160 |
| | 4.4 | Lift | | h ₃ | mm | 2970 | 2970 | 2970 | 2970 | 2970 | 2970 | 2970 | 2970 | 2970 | 2970 |
| | 4.5 | Height, mast raised | | h ₄ | mm | 3600 | 3600 | 3600 | 3600 | 3750 | 3750 | 3750 | 3750 | 3750 | 3750 |
| | 4.7 | Height over overhead guard (cab) | | h ₆ | mm | 2190 | 2190 | 2190 | 2190 | 2190 | 2190 | 2190 | 2195 | 2195 | 2195 |
| | 4.8 | Seat height/stand height rel. to SIP | | h ₇ | mm | 1074 | 1074 | 1074 | 1074 | 1074 | 1074 | 1074 | 1074 | 1074 | 1074 |
| | 4.12 | Coupling height | | h ₁₀ | mm | 425 | 425 | 425 | 425 | 425 | 425 | 425 | 425 | 425 | 425 |
| | 4.19 | Overall length | | l ₁ | mm | 3625 | 3625 | 3625 | 3625 | 3730 | 3730 | 3730 | 3795 | 3795 | 3795 |
| | 4.20 | Length including fork backs | | l ₂ | mm | 2625 | 2625 | 2625 | 2625 | 2730 | 2730 | 2730 | 2795 | 2795 | 2795 |
| | 4.21 | Overall width | | b ₁ | mm | 1180 | 1180 | 1180 | 1180 | 1180 | 1180 | 1180 | 1224 | 1224 | 1224 |
| | 4.22 | Fork dimensions | | s/e/l | mm | 40/100/1000 | 40/100/1000 | 40/100/1000 | 40/100/1000 | 50/100/1000 | 50/100/1000 | 50/100/1000 | 50/100/1000 | 50/100/1000 | 50/100/1000 |
| | 4.23 | Fork carriage ISO 2328, Class/Form A, B | | | | Cl. II, Form A | Cl. II, Form A | Cl. II, Form A | Cl. II, Form A | Cl. III, Form A | Cl. III, Form A | Cl. III, Form A | Cl. III, Form A | Cl. III, Form A | Cl. III, Form A |
| | 4.24 | Fork carriage width | | b ₃ | mm | 1040 | 1040 | 1040 | 1040 | 1100 | 1100 | 1100 | 1100 | 1100 | 1100 |
| | 4.31 | Ground clearance under mast, laden | | m ₁ | mm | 125 | 125 | 125 | 125 | 125 | 125 | 125 | 125 | 125 | 125 |
| | 4.32 | Ground clearance, centre of wheel base | | m ₂ | mm | 150 | 150 | 150 | 150 | 150 | 150 | 150 | 150 | 150 | 150 |
| | 4.33 | Working aisle width with pallet 1000 x 1200 crossways | | A _{st} | mm | 3967 | 3967 | 3967 | 3967 | 4062 | 4062 | 4062 | 4152 | 4152 | 4152 |
| | 4.34 | Working aisle width with pallet 800 x 1200 lengthways | | A _{st} | mm | 4167 | 4137 | 4167 | 4167 | 4262 | 4262 | 4262 | 4352 | 4352 | 4352 |
| | 4.35 | Turning radius | | W _a | mm | 2312 | 2312 | 2312 | 2312 | 2387 | 2387 | 2387 | 2477 | 2477 | 2477 |
| 4.36 | Smallest pivot point distance | | b ₁₃ | mm | 589 | 589 | 589 | 589 | 589 | 589 | 589 | 589 | 589 | 589 | |
| Performance data | 5.1 | Travel speed | laden/unladen | | km/h | 21/21 | 21/21 | 21/21 | 21/21 | 21/21 | 21/21 | 21/21 | 21/21 | 21/21 | 21/21 |
| | 5.2 | Lifting speed | laden/unladen | | m/s | 0.57/0.60 | 0.53/0.55 | 0.55/0.60 | 0.53/0.55 | 0.50/0.53 | 0.55/0.55 | 0.48/0.50 | 0.43/0.53 | 0.48/0.55 | 0.48/0.50 |
| | 5.3 | Lowering speed | laden/unladen | | m/s | 0.60/0.53 | 0.60/0.53 | 0.60/0.53 | 0.60/0.53 | 0.60/0.53 | 0.60/0.53 | 0.60/0.53 | 0.60/0.53 | 0.60/0.53 | 0.60/0.53 |
| | 5.5 | Traction | laden/unladen | | N | 17500/12140 | 17500/12140 | 17500/12140 | 17500/12140 | 17600/12300 | 18300/12300 | 17500/12300 | 17400/13400 | 18300/13400 | 17000/13400 |
| | 5.8 | Max. gradeability | laden/unladen | | % | 29/26 | 29/26 | 29/26 | 29/26 | 23/24 | 23/24 | 25/24 | 21/20 | 23/20 | 24/20 |
| | 5.9 | Acceleration time | laden/unladen | | s | 5.1/4.5 | 5.1/4.5 | 5.1/4.5 | 5.1/4.5 | 5.4/4.7 | 5.1/4.3 | 5.1/4.5 | 5.8/5.1 | 5.4/4.6 | 5.4/4.8 |
| | 5.10 | Service brake | | | | Electric/hydraulic | Electric/hydraulic | Electric/hydraulic | Electric/hydraulic | Electric/hydraulic | Electric/hydraulic | Electric/hydraulic | Electric/hydraulic | Electric/hydraulic | Electric/hydraulic |
| | 7.1 | Engine manufacturer | | | | VW | VW | VW | VW | VW | VW | VW | VW | VW | VW |
| | 7.1.1 | Type | | | | BXT | BEF | BXT | BEF | BXT | BEF | BXT | BXT | BEF | BEF |
| | 7.2 | Engine rating to ISO 1585 | | | kW | 30 | 36 | 30 | 36 | 30 | 30 | 38 | 30 | 30 | 38 |
| 7.2.1 | Additional power of electrical energy storage | | | kW | - | - | - | - | - | 8 | - | - | 8 | - | |
| 7.3 | Nominal speed | | | 1/min | 2600 | 2600 | 2600 | 2600 | 2600 | 2600 | 2600 | 2600 | 2600 | 2600 | |
| 7.4 | Number of cylinders | | | | 4 | 4 | 4 | 4 | 4 | 4 | 4 | 4 | 4 | 4 | |
| 7.4.1 | Swept volume | | | cm ³ | 1900 | 2000 | 1900 | 2000 | 1900 | 1900 | 2000 | 1900 | 1900 | 2000 | |
| 7.5 | Fuel consumption according to VDI Cycle (60 runs/h) | | | l/h kg/h | 2.5 | 2.6 | 2.5 | 2.6 | 3.1 | 2.8 | 2.9 | 3.3 | 2.9 | 3.1 | |
| 7.9 | On-board voltage | | | V | 12 | 12 | 12 | 12 | 12 | 12 | 12 | 12 | 12 | 12 | |
| 8.1 | Drive control | | | | Diesel-electric | Diesel-electric | Diesel-electric | Diesel-electric | Diesel-electric | Diesel-electric/hybrid | Diesel-electric | Diesel-electric | Diesel-electric/hybrid | Diesel-electric | |
| Miscellaneous | 10.1 | Working pressure for attachments | | | bar | 250 | 250 | 250 | 250 | 250 | 250 | 250 | 250 | 250 | |
| | 10.2 | Oil volume for attachments | | | l/min | 30 | 30 | 30 | 30 | 30 | 30 | 30 | 30 | 30 | |
| | 10.4 | Volume fuel tank | | | l/kg | 58 | 11 | 58 | 11 | 58 | 58 | 11 | 58 | 11 | |
| | 10.7 | Sound pressure level L _{PAZ} ¹ (driver's seat) | | | dB(A) | <77 | <77 | <77 | <77 | <77 | <77 | <77 | <77 | <77 | <77 |
| | 10.7.1 | Sound power level LWAZ (work cycle) | | | dB(A) | <99 | <97 | <99 | <97 | <99 | <99 | <97 | <99 | <97 | <97 |
| | | Body vibrations ² in accordance with EN 13059 | | | m/s ² | 0.58 | 0.58 | 0.58 | 0.58 | 0.58 | 0.58 | 0.58 | 0.58 | 0.58 | 0.58 |
| | 10.8 | Towing coupler, Type/Model DIN | | | | Pin | Pin | Pin | Pin | Pin | Pin | Pin | Pin | Pin | Pin |

¹ Without cab; different values with cab

² With standard driver's seat

RX 70-20/35 Diesel and LPG Forklift Trucks
Mast Tables



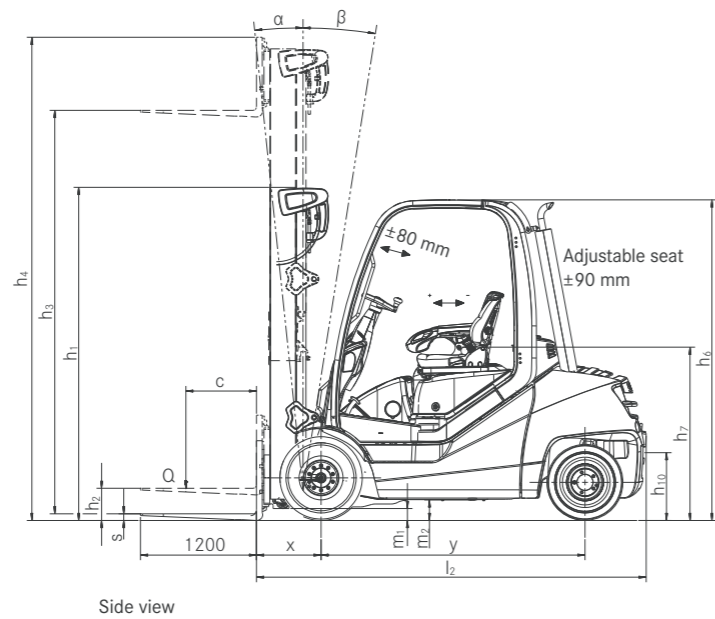
| | | | | Telescopic mast | | | | | | | | HiLo mast | | | | | | Triplex mast | | | | | | | | | | | | | | |
|---------------|-------------------------------------|------------------|-----------------|---|------|------|------|------|------|------|------|-----------|------|------|------|--------------------|------|--------------|------|------|------|--------------------|------|------|------|--|------|----------|--|--|--|--|
| RX 70-20/600 | Nominal lift | h_3 | mm | 2870 | 2970 | 3170 | 3270 | 3670 | 4170 | 4570 | 5070 | 2990 | 3090 | 3290 | 3690 | 4090 | 4590 | 4440 | 4590 | 4890 | 5390 | 5690 | 6040 | 6640 | 7390 | | | | | | | |
| | Overall height | h_1 | mm | 2125 | 2175 | 2275 | 2325 | 2525 | 2775 | 2975 | 3225 | 2125 | 2175 | 2275 | 2475 | 2675 | 2925 | 2125 | 2175 | 2275 | 2475 | 2575 | 2725 | 2925 | 3175 | | | | | | | |
| | Free lift | h_2 | mm | 160 | 160 | 160 | 160 | 160 | 160 | 160 | 160 | 1500 | 1550 | 1650 | 1850 | 2050 | 2300 | 1500 | 1550 | 1650 | 1850 | 1950 | 2100 | 2300 | 2550 | | | | | | | |
| | Maximum height | h_4 | mm | 3500 | 3600 | 3800 | 3900 | 4300 | 4800 | 5200 | 5700 | 3650 | 3750 | 3950 | 4350 | 4750 | 5250 | 5120 | 5270 | 5570 | 6070 | 6370 | 6720 | 7320 | 8070 | | | | | | | |
| | Tilt of mast/fork carriage | forward/backward | α/β | 6/7 | | | | | | | | | | | | 6/7 | | | | | | | | | | | | | | | | |
| | Fork lock-in position centre-centre | | mm | 216 / 368 / 445 / 521 / 673 / 820 (fork carriage width 1040 mm) / 826 (fork carriage width 1190/1270 mm) / 970 (fork carriage width 1190 mm) / 1050 (fork carriage width 1270 mm) | | | | | | | | | | | | | | | | | | | | | | | | | | | | |
| | Tyres | front/rear | | 23 x 9-10/21 x 8-9 | | | | | | | | | | | | 23 x 9-10/21 x 8-9 | | | | | | 23 x 9-10/21 x 8-9 | | | | | | | | | | |
| | Track | front/rear | b_{10}/b_{11} | 984/920 | | | | | | | | | | | | 984/920 | | | | | | 984/920 | | | | | | 1048/920 | | | | |
| Maximum width | | b_1 | 1180 | | | | | | | | | | | | 1180 | | | | | | 1180 | | | | | | 1280 | | | | | |

| | | | | Telescopic mast | | | | | | | | HiLo mast | | | | | | Triplex mast | | | | | | | | | | | | | | |
|---------------|-------------------------------------|------------------|-----------------|---|------|------|------|------|------|------|------|-----------|------|------|------|--------------------|------|--------------|------|------|------|--------------------|------|------|------|--|------|----------|--|--|--|--|
| RX 70-25 | Nominal lift | h_3 | mm | 2870 | 2970 | 3170 | 3270 | 3670 | 4170 | 4570 | 5070 | 2990 | 3090 | 3290 | 3690 | 4090 | 4590 | 4440 | 4590 | 4890 | 5390 | 5690 | 6040 | 6640 | 7390 | | | | | | | |
| | Overall height | h_1 | mm | 2125 | 2175 | 2275 | 2325 | 2525 | 2775 | 2975 | 3225 | 2125 | 2175 | 2275 | 2475 | 2675 | 2925 | 2125 | 2175 | 2275 | 2475 | 2575 | 2725 | 2925 | 3175 | | | | | | | |
| | Free lift | h_2 | mm | 160 | 160 | 160 | 160 | 160 | 160 | 160 | 160 | 1500 | 1550 | 1650 | 1850 | 2050 | 2300 | 1500 | 1550 | 1650 | 1850 | 1950 | 2100 | 2300 | 2550 | | | | | | | |
| | Maximum height | h_4 | mm | 3500 | 3600 | 3800 | 3900 | 4300 | 4800 | 5200 | 5700 | 3650 | 3750 | 3950 | 4350 | 4750 | 5250 | 5120 | 5270 | 5570 | 6070 | 6370 | 6720 | 7320 | 8070 | | | | | | | |
| | Tilt of mast/fork carriage | forward/backward | α/β | 6/7 | | | | | | | | | | | | 6/7 | | | | | | 6/7 | | | | | | | | | | |
| | Fork lock-in position centre-centre | | mm | 216 / 368 / 445 / 521 / 673 / 820 (fork carriage width 1040 mm) / 826 (fork carriage width 1190/1270 mm) / 970 (fork carriage width 1190 mm) / 1050 (fork carriage width 1270 mm) | | | | | | | | | | | | | | | | | | | | | | | | | | | | |
| | Tyres | front/rear | | 23 x 9-10/21 x 8-9 | | | | | | | | | | | | 23 x 9-10/21 x 8-9 | | | | | | 23 x 9-10/21 x 8-9 | | | | | | | | | | |
| | Track | front/rear | b_{10}/b_{11} | 984/920 | | | | | | | | | | | | 984/920 | | | | | | 984/920 | | | | | | 1048/920 | | | | |
| Maximum width | | b_1 | 1180 | | | | | | | | | | | | 1180 | | | | | | 1180 | | | | | | 1280 | | | | | |

| | | | | Telescopic mast | | | | | | | | HiLo mast | | | | | | Triplex mast | | | | | | | | | | | | | | | | | | | | |
|---------------|-------------------------------------|------------------|-----------------|--|------|------|------|------|------|------|------|-----------|------|------|------|--------------------|------|--------------|------|------|------|--------------------|------|------|------|------|------|--------------------|--|--|--|--|------|----------|--|--|--|--|
| RX 70-30 | Nominal lift | h_3 | mm | 2870 | 2970 | 3170 | 3270 | 3670 | 4170 | 4570 | 5070 | 2990 | 3090 | 3290 | 3690 | 4090 | 4590 | 4440 | 4590 | 4890 | 5190 | 5390 | 5690 | 6040 | 6640 | 7390 | | | | | | | | | | | | |
| | Overall height | h_1 | mm | 2125 | 2175 | 2275 | 2325 | 2525 | 2775 | 2975 | 3225 | 2125 | 2175 | 2275 | 2475 | 2675 | 2925 | 2125 | 2175 | 2275 | 2375 | 2475 | 2575 | 2725 | 2925 | 3175 | | | | | | | | | | | | |
| | Free lift | h_2 | mm | 160 | 160 | 160 | 160 | 160 | 160 | 160 | 160 | 1470 | 1520 | 1620 | 1820 | 2020 | 2270 | 1470 | 1520 | 1620 | 1720 | 1820 | 1920 | 2070 | 2270 | 2520 | | | | | | | | | | | | |
| | Maximum height | h_4 | mm | 3650 | 3750 | 3950 | 4050 | 4450 | 4950 | 5350 | 5850 | 3680 | 3780 | 3980 | 4380 | 4780 | 5280 | 5140 | 5290 | 5590 | 5890 | 6090 | 6390 | 6740 | 7340 | 8090 | | | | | | | | | | | | |
| | Tilt of mast/fork carriage | forward/backward | α/β | 6/7 | | | | | | | | | | | | 6/7 | | | | | | 6/7 | | | | | | | | | | | | | | | | |
| | Fork lock-in position centre-centre | | mm | 191 / 368 / 572 / 673 / 796 (fork carriage width 1100 mm) / 876 (fork carriage width 1100/1200 mm) / 978 (fork carriage width 1200/1310 mm) / 1080 (fork carriage width 1310 mm) | | | | | | | | | | | | | | | | | | | | | | | | | | | | | | | | | | |
| | Tyres | front/rear | | 23 x 9-10/21 x 8-9 | | | | | | | | | | | | 23 x 9-10/21 x 8-9 | | | | | | 23 x 9-10/21 x 8-9 | | | | | | 315/45-12/21 x 8-9 | | | | | | | | | | |
| | Track | front/rear | b_{10}/b_{11} | 984/920 | | | | | | | | | | | | 984/920 | | | | | | 984/920 | | | | | | 1048/920 | | | | | | 1100/920 | | | | |
| Maximum width | | b_1 | 1180 | | | | | | | | | | | | 1180 | | | | | | 1180 | | | | | | 1280 | | | | | | 1385 | | | | | |

| | | | | Telescopic mast | | | | | | | | HiLo mast | | | | | | Triplex mast | | | | | | | | | | | | | | | | | | | | | | | | | | |
|---------------|-------------------------------------|------------------|-----------------|--|------|------|------|------|------|------|------|-----------|------|------|------|---------------------|------|--------------|------|------|------|---------------------|------|------|------|------|------|--------------------|--|--|--|--|------|----------|--|--|--|--|------|----------|--|--|--|--|
| RX 70-35 | Nominal lift | h_3 | mm | 2870 | 2970 | 3170 | 3270 | 3670 | 4170 | 4570 | 5070 | 2990 | 3090 | 3290 | 3690 | 4090 | 4590 | 4440 | 4590 | 4890 | 5190 | 5390 | 5690 | 6040 | 6640 | 7390 | | | | | | | | | | | | | | | | | | |
| | Overall height | h_1 | mm | 2125 | 2175 | 2275 | 2325 | 2525 | 2775 | 2975 | 3225 | 2125 | 2175 | 2275 | 2475 | 2675 | 2925 | 2125 | 2175 | 2275 | 2375 | 2475 | 2575 | 2725 | 2925 | 3175 | | | | | | | | | | | | | | | | | | |
| | Free lift | h_2 | mm | 160 | 160 | 160 | 160 | 160 | 160 | 160 | 160 | 1470 | 1520 | 1620 | 1820 | 2020 | 2270 | 1470 | 1520 | 1620 | 1720 | 1820 | 1920 | 2070 | 2270 | 2520 | | | | | | | | | | | | | | | | | | |
| | Maximum height | h_4 | mm | 3650 | 3750 | 3950 | 4050 | 4450 | 4950 | 5350 | 5850 | 3680 | 3780 | 3980 | 4380 | 4780 | 5280 | 5140 | 5290 | 5590 | 5890 | 6090 | 6390 | 6740 | 7340 | 8090 | | | | | | | | | | | | | | | | | | |
| | Tilt of mast/fork carriage | forward/backward | α/β | 6/7 | | | | | | | | | | | | 6/7 | | | | | | 6/7 | | | | | | | | | | | | | | | | | | | | | | |
| | Fork lock-in position centre-centre | | mm | 191 / 368 / 572 / 673 / 796 (fork carriage width 1100 mm) / 876 (fork carriage width 1100/1200 mm) / 978 (fork carriage width 1200/1310 mm) / 1080 (fork carriage width 1310 mm) | | | | | | | | | | | | | | | | | | | | | | | | | | | | | | | | | | | | | | | | |
| | Tyres | front/rear | | 23 x 10-12/21 x 8-9 | | | | | | | | | | | | 23 x 10-12/21 x 8-9 | | | | | | 23 x 10-12/21 x 8-9 | | | | | | 315/45-12/21 x 8-9 | | | | | | | | | | | | | | | | |
| | Track | front/rear | b_{10}/b_{11} | 975/920 | | | | | | | | | | | | 1048/920 | | | | | | 975/920 | | | | | | 975/920 | | | | | | 1048/920 | | | | | | 1100/920 | | | | |
| Maximum width | | b_1 | 1224 | | | | | | | | | | | | 1280 | | | | | | 1224 | | | | | | 1224 | | | | | | 1280 | | | | | | 1385 | | | | | |

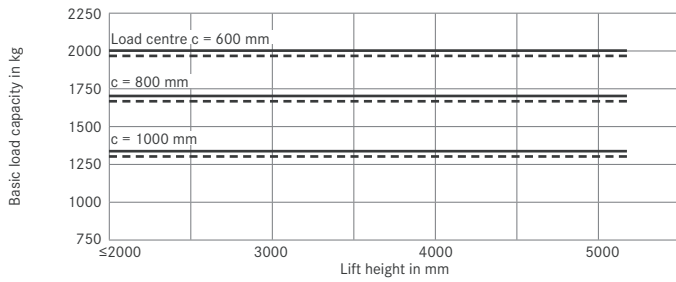
Technical Drawings



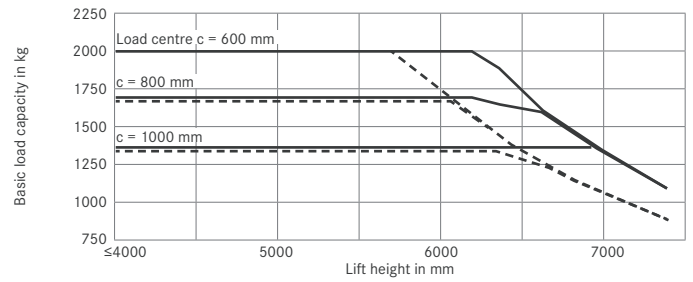
RX 70-20/35 Diesel and LPG Forklift Trucks

Basic Load Capacities

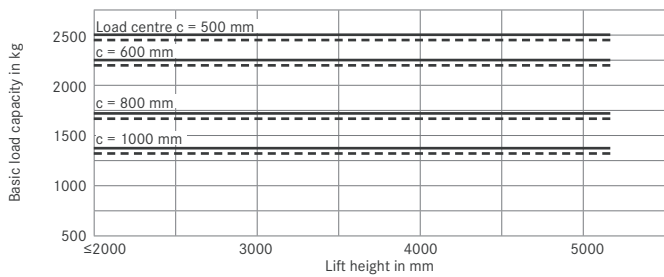
**RX 70-20/600 Telescopic and HiLo mast
single Superelastic tyres**



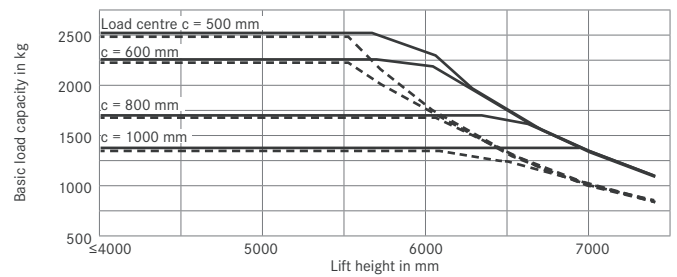
**RX 70-20/600 Triplex mast
single Superelastic tyres**



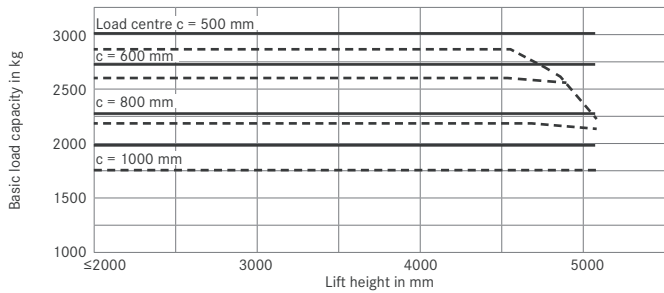
**RX 70-25 Telescopic and HiLo mast
single Superelastic tyres**



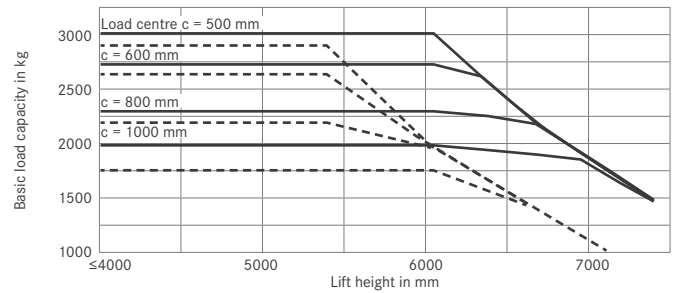
**RX 70-25 Triplex mast
single Superelastic tyres**



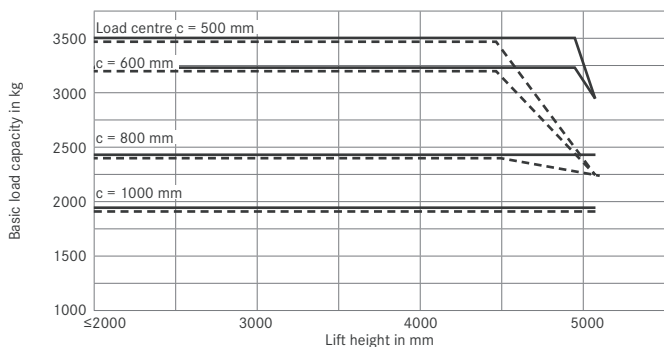
**RX 70-30 Telescopic and HiLo mast
single Superelastic tyres**



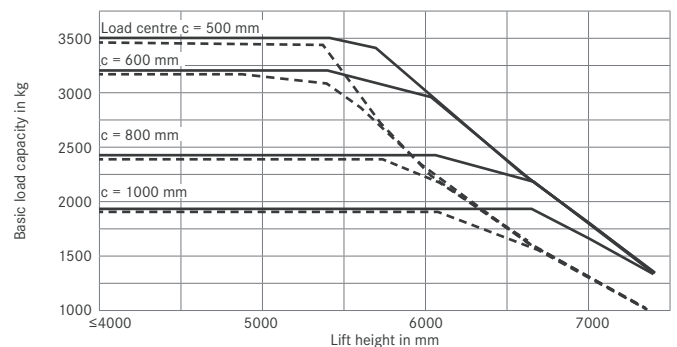
**RX 70-30 Triplex mast
single Superelastic tyres**



**RX 70-35 Telescopic and HiLo mast
single Superelastic tyres**



**RX 70-35 Triplex mast
single Superelastic tyres**



— With standard forks - - - With integrated side shifter and standard forks
The values indicated may vary depending on the truck's features

RX 70-20/35 Diesel and LPG Forklift Trucks
Detailed Photos



Extra safety with Safety Light 4Plus and LED lighting



Communication interface: radio with USB port and Bluetooth handsfree set



Excellent visibility looking forwards thanks to clear-view mast and low dash panel



Convenient and precise hydraulic operation with Joystick 4Plus



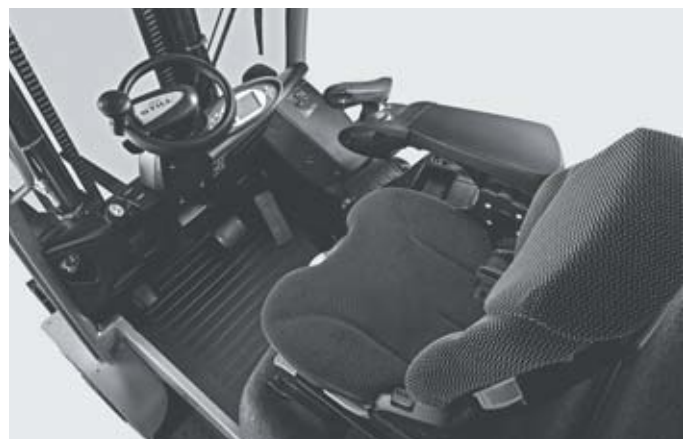
Clever energy-saving features thanks to the hybrid drive



Storage compartments with 12 V socket, e.g. to charge a mobile phone



Large and wide footwell as well as an unrestricted entry and exit area



Spacious and comfortable driver's cab



RX 70-20/35 Diesel and LPG Forklift Trucks

Saving energy has never been easier

Safety by nature – particularly stable driving behaviour due to truck's low centre of gravity

Diesel-electric drive with hybrid technology – most efficient forklift in its class: only 2.5 l/h

Excellent visibility, partly due to the narrow mast design



With a lifting capacity of 2.0 to 3.5 tonnes, the RX 70 stands out not just because of its wide field of vision, compact dimensions, and precise and sensitive ease of use – it is also a milestone in sustainability. Thanks to the diesel-electric drive, all RX 70 forklifts are unbeatable for energy-efficiency. That also applies to the multi-award-winning RX 70 hybrid: this hybrid truck obtains its fuel firstly from a diesel tank and secondly from electrical energy stores, the Ultra-Caps.

The electrical current generated when braking is stored in these dual layer capacitors and then made available for driving or lifting procedures. This reduces the fuel consumption by up to 20 per cent – with the same performance! And lower fuel consumption also means lower CO₂ emissions. Discover the new generation of smart energy saving. The RX 70 Hybrid will pay dividends.

Extensive Equipment

Power

- Can lift up to 3.5 tonnes with a load centre of 500 mm
- Move goods effectively: driving speed of up to 21 km/h
- Power meets endurance: maintenance-free rotary current drive
- Perfect power control: electrically adjustable hydraulic pump

Precision

- Select maximum turnover or maximum efficiency: with 5 driving programmes you stay flexible at all times
- Adjustable to suit every task: speed, acceleration and braking can all be individually set
- The latest hydraulic technology for particularly sensitive and precise load handling

Ergonomics

- Comfortable workstation: spacious, comfortable driver's cab that can be individually set up and offering numerous storage compartments
- Welcome home: standard, easy-to-use operating concept across the whole RX product line
- Simple and safe: entry and exit via large non-slip steps that are also visible from above, and grab handles on the protective roof.
- Choose from a range of individual control concepts: mini-lever, Fingertip or Joystick 4Plus
- High degree of driving comfort: comfortable and health-orientated driving due to very low human vibration values

Compactness

- Ideal in the smallest of spaces: compact truck dimensions and very high manoeuvrability allow for optimum use of warehouse space

Safety

- Perfect all-round view: large viewing window, also in the protective roof
- Transport loads safely: narrow mast profile and low tilt cylinder give uninterrupted view of prongs and fork carriage
- Extremely stable: truck has low centre of gravity
- Stays firmly on track: outstanding driving stability when turning

Environmental Responsibility

- Low operating costs: low fuel consumption and long service intervals
- Sustainable: very low CO₂ emissions
- Strong and intelligent: Blue-Q efficiency mode saves up to 10 percent energy at the press of a button with no loss of performance
- Recyclable: over 95 per cent of all installed materials are recyclable

RX 70-20/35 Diesel and LPG Forklift Trucks
Equipment Variants



| | RX 70-20/600 | RX 70-20/600 T ¹ | RX 70-25 | RX 70-25 T ¹ | RX 70-30 | RX 70-30 H ² | RX 70-30 T ¹ | RX 70-35 | RX 70-35 H ² | RX 70-35 T ¹ |
|--|--------------|-----------------------------|----------|-------------------------|----------|-------------------------|-------------------------|----------|-------------------------|-------------------------|
| Driver's seat | | | | | | | | | | |
| Impact-absorbing driver's seat for optimal comfort on uneven routes | ● | ● | ● | ● | ● | ● | ● | ● | ● | ● |
| Steel protective roof | ● | ● | ● | ● | ● | ● | ● | ● | ● | ● |
| Driver's cab set low, height approx. 2120 mm | ○ | ○ | ○ | ○ | ○ | ○ | ○ | ○ | ○ | ○ |
| Driver's cab set high, height approx. 2540 mm | — | — | — | ○ | — | — | ○ | — | — | ○ |
| Weather protection design in different variants | ○ | ○ | ○ | ○ | ○ | ○ | ○ | ○ | ○ | ○ |
| Driver's cab or tarpaulin cab | ○ | ○ | ○ | ○ | ○ | ○ | ○ | ○ | ○ | ○ |
| Tinted front windscreen, rear and roof windows, windscreen washing/wiping facility | ○ | ○ | ○ | ○ | ○ | ○ | ○ | ○ | ○ | ○ |
| Single-pedal transmission control | ● | ● | ● | ● | ● | ● | ● | ● | ● | ● |
| Double-pedal transmission control | ○ | ○ | ○ | ○ | ○ | ○ | ○ | ○ | ○ | ○ |
| Built-in storage and drink holder | ● | ● | ● | ● | ● | ● | ● | ● | ● | ● |
| Display and function buttons protected from water spray | ● | ● | ● | ● | ● | ● | ● | ● | ● | ● |
| Grammer driver's seat with leatherette cover | ● | ● | ● | ● | ● | ● | ● | ● | ● | ● |
| Comfort driver's seat with textile cover and lumbar support | ○ | ○ | ○ | ○ | ○ | ○ | ○ | ○ | ○ | ○ |
| Swivel seat for a healthy body posture when reversing | ○ | ○ | ○ | ○ | ○ | ○ | ○ | ○ | ○ | ○ |
| Driver's seat excl. with leatherette or textile cover, mechanical or airsprung, extra-wide seat pad, large suspension travel, lumbar support, height-adjustable back extension and heated seat | ○ | ○ | ○ | ○ | ○ | ○ | ○ | ○ | ○ | ○ |
| Horizontal spring plate for driver's seat to minimise human vibrations | ○ | ○ | ○ | ○ | ○ | ○ | ○ | ○ | ○ | ○ |
| Roof liner with interior lighting | ○ | ○ | ○ | ○ | ○ | ○ | ○ | ○ | ○ | ○ |
| Radio/MP3 player with USB connection | ○ | ○ | ○ | ○ | ○ | ○ | ○ | ○ | ○ | ○ |
| Adjustable roof window | ○ | ○ | ○ | ○ | ○ | ○ | ○ | ○ | ○ | ○ |
| Protective sunshade and sun blind | ○ | ○ | ○ | ○ | ○ | ○ | ○ | ○ | ○ | ○ |
| Water heating with blower and defroster nozzles for front windscreen and footwell | ○ | ○ | ○ | ○ | ○ | ○ | ○ | ○ | ○ | ○ |
| Air conditioning | ○ | ○ | ○ | ○ | ○ | ○ | ○ | ○ | ○ | ○ |
| Mast | | | | | | | | | | |
| Telescopic free view mast with and without full free lift | ○ | ○ | ○ | ○ | ○ | ○ | ○ | ○ | ○ | ○ |
| Triplex mast | ○ | ○ | ○ | ○ | ○ | ○ | ○ | ○ | ○ | ○ |
| Fork wear protection | ○ | ○ | ○ | ○ | ○ | ○ | ○ | ○ | ○ | ○ |
| Different fork carriage widths and integrated side shifter | ○ | ○ | ○ | ○ | ○ | ○ | ○ | ○ | ○ | ○ |
| Load backrest | ○ | ○ | ○ | ○ | ○ | ○ | ○ | ○ | ○ | ○ |
| Automatic mast vertical position | ○ | ○ | ○ | ○ | ○ | ○ | ○ | ○ | ○ | ○ |
| Hydraulic accumulator in the lifting cylinder to attenuate pressure peaks in the hydraulic system | ○ | ○ | ○ | ○ | ○ | ○ | ○ | ○ | ○ | ○ |
| Angle of incline 6/7 degrees front/rear incline | ● | ● | ● | ● | ● | ● | ● | ● | ● | ● |
| Bellows protect the tilt cylinder from dust and moisture | ○ | ○ | ○ | ○ | ○ | ○ | ○ | ○ | ○ | ○ |
| Tyres | | | | | | | | | | |
| Super elastic tyres, SIT system, single or twin | ● | ● | ● | ● | ● | ● | ● | ● | ● | ● |
| Super elastic tyres, SIT system, natural colour or anti-static | ○ | ○ | ○ | ○ | ○ | ○ | ○ | ○ | ○ | ○ |
| Pneumatic tyres, single or twin | ○ | ○ | ○ | ○ | ○ | ○ | ○ | ○ | ○ | ○ |
| Hydraulics | | | | | | | | | | |
| Proportional valve technology for especially sensitive movements | ● | ● | ● | ● | ● | ● | ● | ● | ● | ● |
| Up to three hydraulic circuits for controlling accessories | ○ | ○ | ○ | ○ | ○ | ○ | ○ | ○ | ○ | ○ |
| Custom parametrisation of hydraulic functions | ● | ● | ● | ● | ● | ● | ● | ● | ● | ● |
| Mini-lever with armrest, two levers | ● | ● | ● | ● | ● | ● | ● | ● | ● | ● |
| Mini-lever with armrest, three or four levers | ○ | ○ | ○ | ○ | ○ | ○ | ○ | ○ | ○ | ○ |
| Joystick 4Plus or Fingertip | ○ | ○ | ○ | ○ | ○ | ○ | ○ | ○ | ○ | ○ |
| Drives | | | | | | | | | | |
| Five driving programmes for different driving and braking behaviour | ● | ● | ● | ● | ● | ● | ● | ● | ● | ● |
| Blue-Q energy-saving mode | ● | ● | ● | ● | ● | ● | ● | ● | ● | ● |
| Smooth acceleration and reversing | ● | ● | ● | ● | ● | ● | ● | ● | ● | ● |
| Maintenance-free drives for driving, steering and lifting | ● | ● | ● | ● | ● | ● | ● | ● | ● | ● |
| Travel and lift drive components enclosed to protect against dust and dirt | ● | ● | ● | ● | ● | ● | ● | ● | ● | ● |
| Dry air filter with maintenance indicator | ● | ● | ● | ● | ● | ● | ● | ● | ● | ● |
| Additional air filter or cyclone pre-separator | ○ | ○ | ○ | ○ | ○ | ○ | ○ | ○ | ○ | ○ |
| Gas forklift with LPG cylinders | — | ● | — | ● | — | — | ● | — | — | ● |
| LPG tanks 40/55/70 l | — | ○ | — | ○ | — | — | ○ | — | — | ○ |
| Automatic motor shutdown | ○ | ○ | ○ | ○ | ○ | ○ | ○ | ○ | ○ | ○ |
| Motor preheating via external power connection | ○ | ○ | ○ | ○ | ○ | ○ | ○ | ○ | ○ | ○ |
| Regulated 3-way catalytic converter | — | ○ | — | ○ | — | — | ○ | — | — | ○ |
| Diesel particle filter | ○ | — | ○ | — | ○ | — | ○ | — | ○ | — |
| Brake | | | | | | | | | | |
| Wear-free disc brakes that run in an oil bath | ● | ● | ● | ● | ● | ● | ● | ● | ● | ● |
| Energy recovery when braking | ● | ● | ● | ● | ● | ● | ● | ● | ● | ● |
| Hydraulic parking brake | ● | ● | ● | ● | ● | ● | ● | ● | ● | ● |
| Safety | | | | | | | | | | |
| Forklift has a low centre of gravity and steering axle with high self-aligning bearing for optimum levels of safety | ● | ● | ● | ● | ● | ● | ● | ● | ● | ● |
| Simple and safe entry and exit via large non-slip steps | ● | ● | ● | ● | ● | ● | ● | ● | ● | ● |
| Protective grille roof | ○ | ○ | ○ | ○ | ○ | ○ | ○ | ○ | ○ | ○ |
| Narrow protective roof profile for an optimum all-round view | ● | ● | ● | ● | ● | ● | ● | ● | ● | ● |
| Easybelt restraint system for quick and safe fastening and unfastening | ○ | ○ | ○ | ○ | ○ | ○ | ○ | ○ | ○ | ○ |
| IWS restraint system with strap opening located on both sides | ○ | ○ | ○ | ○ | ○ | ○ | ○ | ○ | ○ | ○ |
| Lighting system in halogen or LED design, approvable | ○ | ○ | ○ | ○ | ○ | ○ | ○ | ○ | ○ | ○ |
| Working lights in halogen or LED design | ○ | ○ | ○ | ○ | ○ | ○ | ○ | ○ | ○ | ○ |
| Roof window in rear protective roof area, improved visibility when reversing | ● | ● | ● | ● | ● | ● | ● | ● | ● | ● |
| STILL Safety Light warning device, illuminated blue | ○ | ○ | ○ | ○ | ○ | ○ | ○ | ○ | ○ | ○ |
| Seat belt control, drive unit only enabled when seat belt is fastened | ○ | ○ | ○ | ○ | ○ | ○ | ○ | ○ | ○ | ○ |
| Speed limiter adjustable by driver | ○ | ○ | ○ | ○ | ○ | ○ | ○ | ○ | ○ | ○ |
| Tempomat cruise control | ○ | ○ | ○ | ○ | ○ | ○ | ○ | ○ | ○ | ○ |
| Load measuring with ±2 per cent precision | ○ | ○ | ○ | ○ | ○ | ○ | ○ | ○ | ○ | ○ |
| FleetManager: access authorisation, shock detection, reports, OptiTruck | ○ | ○ | ○ | ○ | ○ | ○ | ○ | ○ | ○ | ○ |

¹ LPG
² Hybrid
● Standard ○ Option — Not available

STILL



STILL GmbH

Berzeliusstraße 10

D-22113 Hamburg

Tel.: +49 (0)40/73 39-20 00

Fax: +49 (0)40/73 39-20 01

info@still.de

For further information please visit:

www.still.eu



STILL is certified in the following areas: Quality management, occupational safety, environmental protection and energy management.



first in intralogistics