



**STRONG PARTNERS.  
TOUGH TRUCKS.™**



# **HIGH CAPACITY FORKLIFT TRUCKS**

**H16XM-9, H16XM-12, H18XM-7.5, H18XM-9**



**16,000KG @ 900 & 1200MM, 18,000KG @ 750 & 900MM**

# H16XM-9, H18XM-7.5, H16XM-12, H18XM-9

DISTINGUISHING MARKS	1.1	Manufacturer (abbreviation)	
	1.2	Manufacturer's type designation	
	1.3	Drive: electric (battery or mains), diesel, petrol, fuel gas	
	1.4	Operator type: hand, pedestrian, standing, seated, order-picker	
	1.5	Rated capacity / rated load	Q (t)
	1.6	Load centre distance	c (mm)
	1.8	Load distance, centre of drive axle to fork $\blacktriangleleft$	x (mm)
	1.9	Wheelbase	y (mm)

WEIGHTS	2.1	Service weight $\bullet$	kg
	2.2	Axle loading, laden front / rear	kg
	2.3	Axle loading, unladen front / rear	kg

TYRES / CHASSIS	3.1	Tyres: L = pneumatic, V = cushion, SE = Pneumatic Shape Solid	
	3.2	Tyre size, front	
	3.3	Tyre size, rear	
	3.5	Number of wheels, front / rear (X = driven)	
	3.6	Tread, front	b <sub>10</sub> (mm)
	3.7	Tread, rear	b <sub>11</sub> (mm)

DIMENSIONS	4.1	Tilt of mast/fork carriage forward/backward	$\alpha / \beta$ (°)
	4.2	Height, mast lowered $\circ$	h <sub>1</sub> (mm)
	4.3	Free lift	h <sub>2</sub> (mm)
	4.4	Lift $\uparrow$	h <sub>3</sub> (mm)
	4.5	Height, mast extended	h <sub>4</sub> (mm)
	4.7	Height of overhead guard / closed cabin $\blacksquare$	h <sub>5</sub> (mm)
	4.7.1	Height of closed cabin w/o / with aircon	h <sub>6</sub> (mm)
	4.7.2	Height of overhead guard / closed cabin with strobe light	h <sub>7</sub> (mm)
	4.7.3	Height of overhead guard / closed cab with work lights	h <sub>8</sub> (mm)
	4.7.4	Height of closed cab with aircon and strobe light	h <sub>9</sub> (mm)
	4.8	Seat height relating to SIP $\bullet$	h <sub>10</sub> (mm)
	4.12	Coupling height	h <sub>11</sub> (mm)
	4.17	Overhang	l <sub>1</sub> (mm)
	4.19	Overall length $\blacksquare$	l <sub>2</sub> (mm)
	4.20	Length to face of forks $\blacksquare$	l <sub>3</sub> (mm)
	4.21	Overall width	b <sub>2</sub> (mm)
	4.22	Fork dimensions ISO 2331	s/e/l (mm)
	4.23	Fork carriage type	
	4.24	Fork carriage width	b <sub>3</sub> (mm)
	4.25	Distance over fork arms, minimum / maximum	b <sub>4</sub> (mm)
	4.30	Sideshift @ width over forks	b <sub>5</sub> / b <sub>6</sub> (mm)
	4.31	Ground clearance, laden, below mast	m <sub>1</sub> (mm)
	4.32	Ground clearance, centre of wheelbase	m <sub>2</sub> (mm)
4.33	Load dimension b <sub>7</sub> x l <sub>4</sub> crossways	b <sub>7</sub> x l <sub>4</sub> (mm)	
4.34.1	Aisle width predetermined load dimensions without operating clearance	A <sub>ST</sub> (mm)	
4.34.2	Aisle width predetermined load dimensions with 200 mm operating clearance $\blacklozenge$	A <sub>ST</sub> (mm)	
4.34.3	Aisle width predetermined load dimensions with 10% operating clearance	A <sub>ST</sub> (mm)	
4.35	Turning radius	W <sub>0</sub> (mm)	
4.36	Internal turning radius $\diamond$	b <sub>13</sub> (mm)	

PERFORMANCE DATA	5.1	Travel speed, laden/unladen *	km/h
	5.2	Lift speed, laden/unladen	m/s
	5.2.1	Lift speed, laden with 70% load	m/s
	5.3	Lowering speed, laden/unladen	m/s
	5.5.1	Drawbar pull, laden / unladen $\square$	kN
	5.5.2	Drawbar pull, laden / unladen *	kN
	5.7.1	Gradeability, laden/unladen $\dagger$ $\square$	%
	5.7.2	Gradeability, laden/unladen $\dagger$ *	%
	5.9	Acceleration time, laden/unladen	
	5.10	Service brake	

ADDITIONAL DATA	10.1	Operating pressure for attachments	MPa
	10.2	Oil volume for attachments	l/min
	10.3	Hydraulic oil tank, capacity	l
	10.4	Fuel tank, capacity	l
	10.4.1	DEF tank capacity	l
	10.5	Steering design	
	10.6	Number of steering rotation	
	10.7	Sound pressure level at the driver's seat $\diamond$ $\blacklozenge$	dB (A)
	10.7	Sound pressure level at the driver's seat $\blacklozenge$ $\blacklozenge$	dB (A)
	10.7.1	Sound power level during the working cycle $\blacklozenge$	dB (A)
	10.7.1	Sound power level during the working cycle $\bullet$	dB (A)
	10.8	Towing coupling, type DIN	

	HYSTER		HYSTER		HYSTER		HYSTER	
	H16XM-9		H18XM-7.5		H16XM-12		H18XM-9	
	Diesel		Diesel		Diesel		Diesel	
	Seated		Seated		Seated		Seated	
	16.0		18.0		16.0		18.0	
	900		750		1,200		900	
	973		973		973		973	
	3,750		3,750		3,750		3,750	

	21,822		21,822		23,322		23,322	
	35,322		2,500		36,433		2,589	
	11,330		10,492		11,330		10,492	
	11,270		12,052		11,270		12,052	

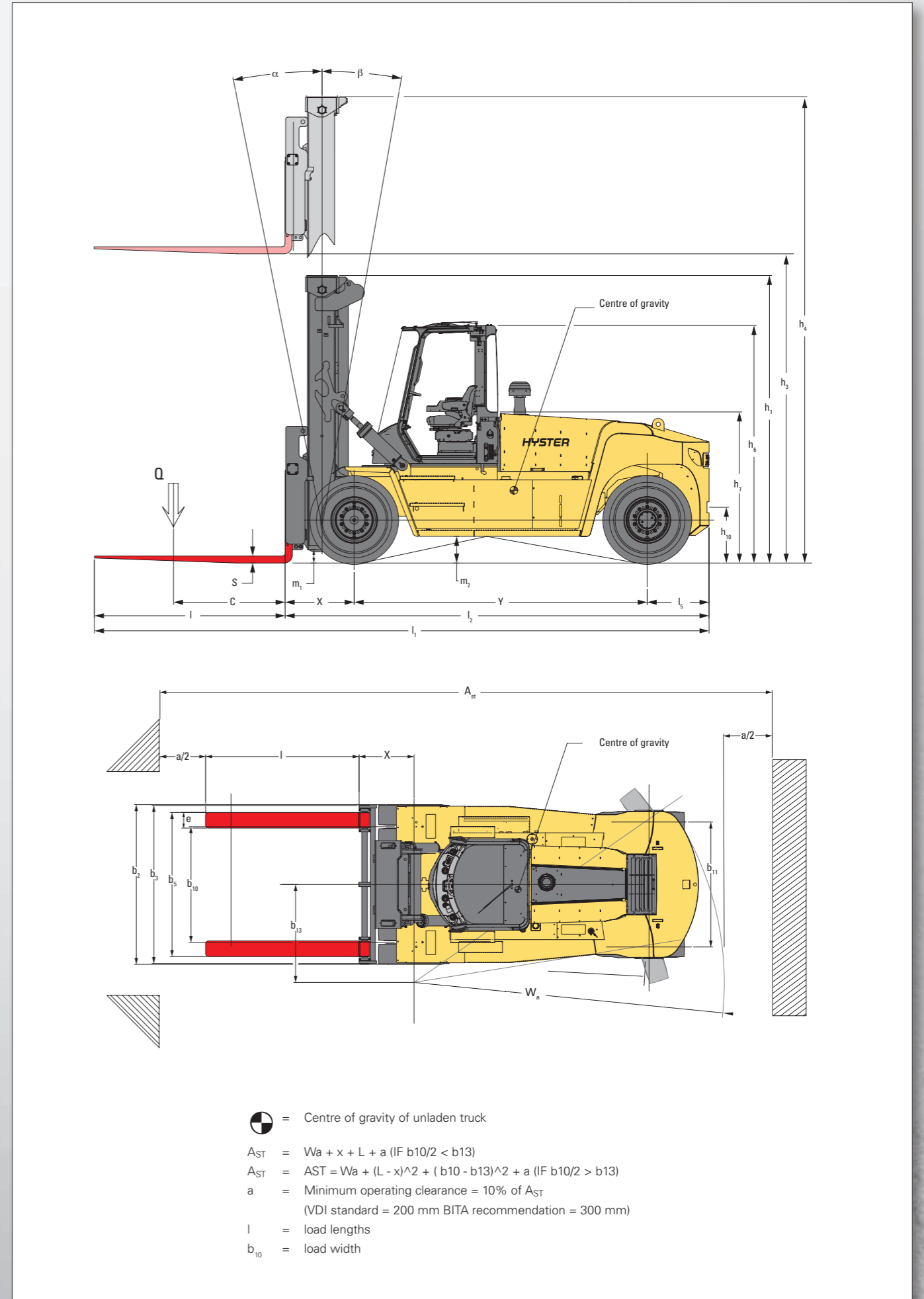
	L		L		L		L	
	12.00 R 20		12.00 R 20		12.00 R 20		12.00 R 20	
	12.00 R 20		12.00 R 20		12.00 R 20		12.00 R 20	
	x 4		2		x 4		2	
	2,218		2,218		2,218		2,218	
	1,994		1,994		1,994		1,994	

	6°		10°		6°		10°		6°		10°	
	3,985		3,985		3,985		3,985		3,985		3,985	
	0		0		0		0		0		0	
	4,494		4,494		4,494		4,494		4,494		4,494	
	6,232		6,232		6,232		6,232		6,232		6,232	
	3,054		3,054		3,054		3,054		3,054		3,054	
	3,090		3,123		3,090		3,123		3,090		3,123	
	3,222		3,222		3,222		3,222		3,222		3,222	
	3,281		3,281		3,281		3,281		3,281		3,281	
	3,296		3,296		3,296		3,296		3,296		3,296	
	1,921		1,921		1,921		1,921		1,921		1,921	
	713		713		713		713		713		713	
	791		791		791		791		791		791	
	7,954		7,954		7,954		7,954		7,954		7,954	
	5,514		5,514		5,514		5,514		5,514		5,514	
	2,542		2,542		2,542		2,542		2,542		2,542	
	100		200		2,440		100		200		2,440	
	Dual Function carriage with Side shift and Fork Positioning Hook type		Dual Function carriage with Side shift and Fork Positioning Hook type		Dual Function carriage with Side shift and Fork Positioning Hook type		Dual Function carriage with Side shift and Fork Positioning Hook type		Dual Function carriage with Side shift and Fork Positioning Hook type		Dual Function carriage with Side shift and Fork Positioning Hook type	
	2,540		2,540		2,540		2,540		2,540		2,540	
	575		2,445		575		2,445		575		2,445	
	+/-468		1,510		+/-468		1,510		+/-468		1,510	
	187		187		187		187		187		187	
	341		341		341		341		341		341	
	2,400 x 2,400		2,400 x 2,400		2,400 x 2,400		2,400 x 2,400		2,400 x 2,400		2,400 x 2,400	
	8,573		8,573		8,573		8,573		8,573		8,573	
	8,773		8,773		8,773		8,773		8,773		8,773	
	9,430		9,430		9,430		9,430		9,430		9,430	
	5,200		5,200		5,200		5,200		5,200		5,200	
	2,026		2,026		2,026		2,026		2,026		2,026	

	27.1		28.7		27.1		28.7		27.1		28.7	
	0.39		0.44		0.37		0.44		0.39		0.44	
	0.42		0.41		0.42		0.41		0.42		0.41	
	0.54		0.45		0.54		0.45		0.54		0.45	
	106		109		106		109		106		109	
	120		123		120		123		120		123	
	30		36		29		36		27		33	
	35		36		33		36		33		33	
	Oil-immersed disc		Oil-immersed disc		Oil-immersed disc		Oil-immersed disc		Oil-immersed disc		Oil-immersed disc	

	19.5		19.5		19.5		19.5	
	100		100		100		100	
	140		140		140		140	
	206		206		206		206	
	19		19		19		19	
	Hydraulic power steering		Hydraulic power steering		Hydraulic power steering		Hydraulic power steering	
	5.4		5.4		5.4		5.4	
	74		74		74		74	
	73		73		73		73	
	108		105		105		105	
	105		105		105		105	
	Pin		Pin		Pin		Pin	

# TRUCK DIMENSIONS



Specification data is based on VDI 2198

## EQUIPMENT AND WEIGHT:

Weights and axle loadings (lines 2.1, 2.2, 2.3) are based on the following specifications:  
 Complete truck with fully equipped cab, with 5300 mm BOF (5400 mm TOF) 2-stage LFL mast,  
 2540 mm wide Dual Function carriage with Side shift and Fork Positioning Hook type and 2440 mm long forks.

## MAST AND CAPACITY INFORMATION

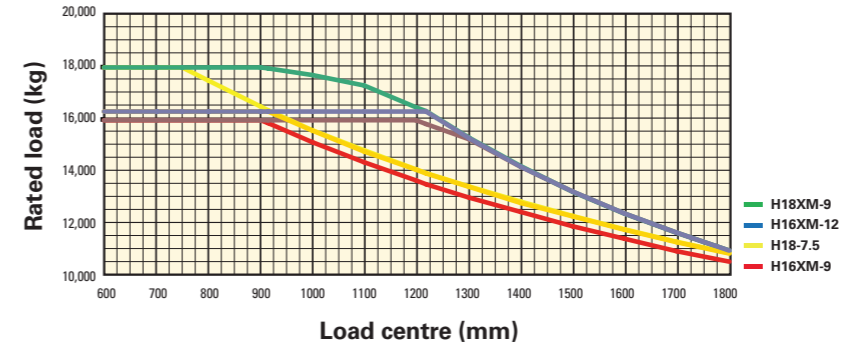
2-Stage NFL	Lift height $h_3$ (mm)	Lowered height $h_1$ (mm)	Free lift height $h_2$ (mm)	Extended height $h_4$ (mm)	Dual Function carriage with Side Shift and Fork positioner			
					H16XM-9 @900 mm LC	H16XM-12 @1200 mm LC	H18XM-7.5 @750 mm LC	H18XM-9 @900 mm LC
	3,884	3,680	0	5,622	16,000	16,000	18,000	18,000
	4,494	3,985	0	6,232	16,000	16,000	18,000	18,000
	5,306	4,390	0	7,044	16,000	16,000	18,000	18,000
	6,119 *	4,790	0	7,858	15,700	15,700	17,650	17,650

## POWERTRAINS

1.1	Manufacturer (abbreviation)	H16-18XM-7.5-9-12	
1.2	Manufacturer's type designation	Diesel	
7.1	Engine manufacturer/type	Cummins QSB 6.7	
7.2	Engine power according to ISO1585 (nominal)	122 @ 2.300	
7.2.1	Engine power according to ISO1585 (maximum)	125 @ 2.100	
7.3	Rated speed	2,300	
7.3.1	Torque (maximum)	732 @ 1.500	
7.4	Number of cylinders/displacements	6	6,690
7.5	Fuel consumption according to VDI cycle	☞	
7.8	Alternator	120	
7.10	Battery voltage/nominal capacity	24	102
8.1	Type of drive unit	Torque Converter	
8.2	Transmission manufacturer/type	ZF	3 WG 161
8.6	Wheel drive/drive axle manufacturer/type	KESSLER	DL81-WB
8.11	Service brake	Oil immersed disc	
8.12	Parking brake	dry disc on drive axle	

## RATED CAPACITIES

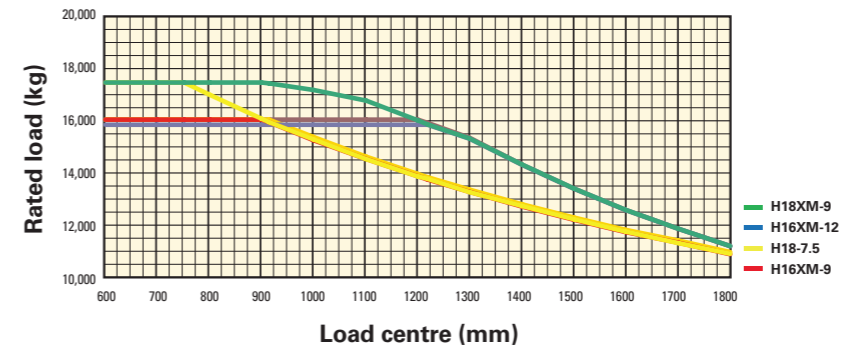
### Pin Type Carriage



**Load centre:** Distance from front of forks to centre of gravity of load.

**Rated load:** Based on vertical mast.

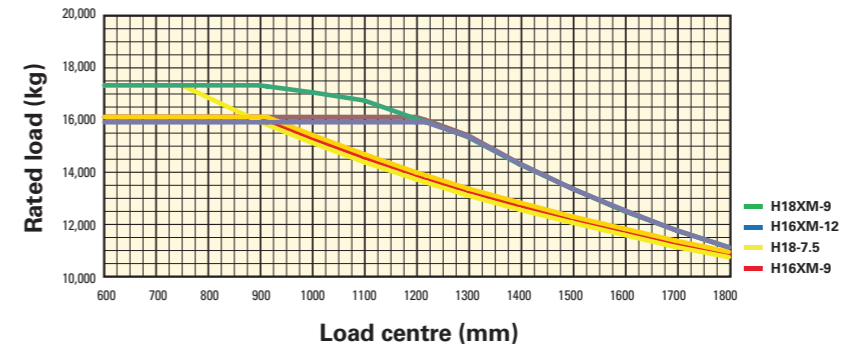
### Pin type Side Shift frame carriage



**Load centre:** Distance from front of forks to centre of gravity of load.

**Rated load:** Based on vertical mast.

### Hook type Dual Function carriage with Side Shift and Fork positioner for quick disconnect forks



**Load centre:** Distance from front of forks to centre of gravity of load.

**Rated load:** Based on vertical mast.

### NOTE:

Specifications are affected by the condition of the vehicle and how it is equipped, as well as the nature and condition of the operating area. Inform your dealer of the nature and condition of the intended operating area when purchasing your Hyster Truck.

- ✦ (DF-SS-FP carriage) QD. deduct 10 mm for fork section 90 x 250 (instead 100 x 200)
- Weights are based on the following specifications: Complete truck with cab, pneumatic tyres, mast, carriage and forks
- Unladen with new tyres
- † Bottom of forks
- +/- 3% tolerance depend on tyre inflated pressure / or tyre brand
- Full suspension seat in depressed position
- ▣ With 100 x 200 section deduct 10 mm if 90 x 250 section.
- ◆ Stacking aisle width is based on the VDI standard calculation as shown on illustration. The British Industrial Truck Association recommends the addition of 100 mm to the total clearance (dimension a) for extra operating margin at the rear of truck.
- ◇ Distance centre truck to centre of internal turning radius
- \* Travel speed laden/unladen limited at 25 km/h as factory default
- at 1.6 km/h.
- † Gradeability figures are provided for comparison of tractive performance, but are not intended to endorse the operation of vehicle on the stated inclines. Follow instructions in the operating manual regarding operation on inclines.
- \* at stall.
- ⊕ Measured according to the test cycles and based on the weighting values contained in EN12053.
- ◆ Measured with low mount exhaust option
- Measured with high mount exhaust option
- ☞ Data available on request, as values are dependent on application

### MAST TABLE:

- \* 6,200 mm mast equipped with 350 mm sideshift carriage

### NOTICE:

Care must be exercised when handling elevated loads. When the carriage and/or load is elevated, truck stability is reduced. It is important that the mast tilt in either direction is kept to a minimum when loads are elevated.

Operators must be trained and must read, understand and follow the instructions contained in the Operating Manual.

All values are nominal values and they are subject to tolerances. For further information, please contact the manufacturer.

Hyster products are subject to change without notice. Lift trucks illustrated may feature optional equipment. Values may vary with alternative configurations.

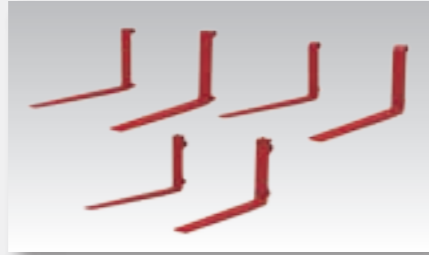
### CE Safety:

This truck conforms to the current EU requirements.

## FRONT END EQUIPMENT



Range of 2 stage NFL masts



Pin Type, Hook Type integral and Hook Type Quick Disconnect forks



2.540 mm wide Pin Type carriage



2.540 mm wide Pin Type carriage with independent Fork Positioner



2.540 mm wide Pin Type Side Shift frame carriage



2.540 mm wide Pin Type Side Shift frame carriage with independent Fork Positioner



2.540 mm wide Hook Type Dual Function carriage with Side Shift and Fork Positioner (FP can be as independent or simultaneously acting)



2.540 mm wide Hook Type Dual Function carriage with Side Shift and Fork Positioner for Quick Disconnect forks (FP can be as independent or simultaneously acting)

## STANDARD EQUIPMENT

- Cummins QSB 6.7 122 kW / max 125 kW @ 2.300–2.100 rpm Turbo Diesel Engine
  - Stage IV Compliant
  - ECO-eLo / HiP performance modes
  - Hibernate Idle
  - Cooling fan with fan clutch
- ZF WG 161 3 speed Hydrodynamic Transmission
- 2-Stage NFL Mast with maximum fork height of 6119 mm
- 2.540 mm wide Side Shift and Fork Positioner carriage
- Oil-immersed Brakes
- SAUER-DANFOSS dual piston variable displacement pump 120 ccm (60 + 60 ccm)
- KESSLER DL81 PL478-NLB Drive axle with oil-immersed disc brake system
- 4-way hydraulic controls with Levers combination without clamping function
- Mast Tilt: 6° Forward / 10° Back
- Directional Control Lever
- Overhead Guard Featuring:
  - Seat-Side Hydraulic Control
  - Multifunction Display Panel
  - Interior Wide Angle Mirrors
  - Telescoping & Tilting Steering Column
  - Floor Mat
  - Isolated Mounting for Low Noise and Vibration
  - Handrails for Operator Entry and Exit
- Tyres – Drive and Steer
  - 12.00-20 20PR Trelleborg T-900 Bias Pneumatic tyres
- Steering Wheel with Spinner Knob
- Electric Horn
- Mechanical Suspension Vinyl Seat with integrated adjustable armrest and 2-point black seat belt
- Air Intake with Sy-Klone pre cleaner and Rain Cap
- Low mount exhaust
- 24 V Electrical System
- 120 Amp Alternator
- Manual Tilt Operator Compartment for Service Access
- Self-adjustable back up Alarm volume > 5dB(A) ambient
- Amber strobe light - Ignition key and switch activated
- Light Kit 2:
  - LED rear cluster with stop, reverse and direction light
  - 2 x Halogen working lights mounted on mast
  - 2 x Halogen drive lights, 2 direction / marker lights mounted on front fender
  - 2 x Halogen working lights mounted rear of the cabin, direction and position light with hazard function
- Non-locking Fuel Cap
- Literature Package
  - Operator's Manual
- Warranty
  - 12 Months / 2,000 Hours Manufacturer's Warranty

## OPTIONAL EQUIPMENT

- 2-Stage NFL Masts with maximum fork heights up to 6119 mm
- 2-Stage FFL Masts with maximum fork heights up to 4300 mm (SPED)
- 3-Stage FFL Masts with maximum fork heights up to 7000 mm (SPED)
- Carriages for 2 Stage NFL, 2 Stage FFL and 3 stage FFL masts
  - 2.540 mm wide Pin Type carriage
  - 2.540 mm wide Pin Type carriage with independent Fork Positioner
  - 2.540 mm wide Pin Type Side Shift frame carriage
  - 2.540 mm wide Pin Type Side Shift frame carriage with independent fork positioner
  - 2.540 mm wide Hook Type Dual Function carriage with Side Shift and Fork Positioner (FP can be as independent or simultaneously acting)
  - 2.540 mm wide Hook Type Dual Function carriage with Side Shift and Fork Positioner for Quick Disconnect forks (FP can be as independent or simultaneously acting)
  - 2.540 mm wide Hook Type Dual Function carriage with Side Shift and simultaneous Fork Positioner for Quick Disconnect forks and 2 auxiliary valves to control a hang on attachment with 2 hydraulic functions
- Up to 6-way hydraulic control functions to control via 4 levers and 2 switches
- Hydraulic Control Joystick with max 5-way function
- Mast Tilt:
  - 15° Forward / 10° Back
  - 10.5° Forward / 12° Back
- MONOTROL™ Pedal
- Tyres – Drive and Steer
  - 12.00-R20 MICHELIN XZM radial
  - 12.00-20 20PR HAULER Bias Pneumatic tyres
- Rear Mud Flaps
- Steer Wheel Nut Protection
- Enclosed Cab with or without Air Conditioning includes:
  - Seat-Side Hydraulic Control Levers
  - Multifunction Display Panel
  - Interior Wide Angle Mirrors
  - Telescoping & Tilting Steering Column
  - I-style Front Screen Wiper
  - H-style double front Screen Wiper
  - Floor Mat
  - 24–12 V DC/DC Converter with 1 or 2 sockets
  - Top & Rear Wipers
  - Heater
  - Re-circulation Fan
- Enclosed Cab options
  - Top and rear sun shades
  - H-style Front screen Wiper
  - Temperature controller
  - Air conditioner, manually controlled
  - Air conditioner, automatically controlled
  - High Performance Air conditioner, manually controlled
  - High Performance Air conditioner, automatically controlled
  - Reading light
  - Trainer seat
  - IT console for on-board computer
  - Storage console
  - H-style Front Screen Wiper
  - Heated top window
  - Engine start interlock
  - Radio preparation, inclusive wire, two speakers and antenna
  - Rain top for OHG
  - Wire mesh protection guard on Top of cab
  - External Mirror right and left
- Seats
  - Mechanical, Full Suspension High backrest Vinyl or Cloth Seat
  - Pneumatic, Full Suspension Vinyl or Cloth Seat
  - Pneumatic, Full Suspension High backrest Vinyl or Cloth Seat
  - Deluxe Air Suspended Full Suspension Cloth Seat
  - Heated Deluxe Air Suspended Full Suspension Cloth Seat
- 3-point seat belt for Deluxe Seat
- Powered Tilt Operator Compartment
- Lockable Battery Disconnect Switch
- High mount exhaust
- Various Light Kits
- Hydraulic Accumulator
- Lockable diesel fuel cap
- Lifting eye shackles
- Engine Block Heater (230V)
- Traction Speed Limiter
- Automatic Engine Shutdown
- Hydraulic temperature protection
- Pressure compensated lowering
- Hyster Tracker Wireless Asset Management system

Other options available through Special Products Engineering Department (SPED). Contact Hyster for details.

# STRONG PARTNERS. TOUGH TRUCKS.™

FOR DEMANDING OPERATIONS, EVERYWHERE.

Hyster supplies a complete range of warehouse equipment, IC and electric counterbalanced trucks, container handlers and reach stackers. Hyster is committed to being much more than a lift truck supplier.

Our aim is to offer a complete partnership capable of responding to the full spectrum of material handling issues: Whether you need professional consultancy on your fleet management, fully qualified service support, or reliable parts supply, you can depend on Hyster.

Our network of highly trained dealers provides expert, responsive local support. They can offer cost-effective finance packages and introduce effectively managed maintenance programmes to ensure that you get the best possible value. Our business is dealing with your material handling needs so you can focus on the success of your business today and in the future.



## HYSTER EUROPE

Centennial House, Frimley Business Park, Frimley, Surrey, GU16 7SG, England.


Tel: +44 (0) 1276 538500




[www.hyster.eu](http://www.hyster.eu) [infoeurope@hyster.com](mailto:infoeurope@hyster.com) [/HysterEurope](https://www.facebook.com/HysterEurope) [@HysterEurope](https://twitter.com/HysterEurope) [/HysterEurope](https://www.youtube.com/HysterEurope) [www.hyster-bigtrucks.com](http://www.hyster-bigtrucks.com)

HYSTER-YALE UK LIMITED trading as Hyster Europe. Registered Address: Centennial House, Building 4.5, Frimley Business Park, Frimley, Surrey, GU16 7SG, United Kingdom.

Registered in England and Wales. Company Registration Number: 02636775.

HYSTER,  and FORTENS are registered trademarks in the European Union and certain other jurisdictions.

MONOTROL® is a registered trademark, and DURAMATCH and  are trademarks in the United States and in certain other jurisdictions.

Hyster products are subject to change without notice. Lift trucks illustrated may feature optional equipment.