

ESM Technical Data  
Electric Stand-on Forklift Truck

---

ESM 10

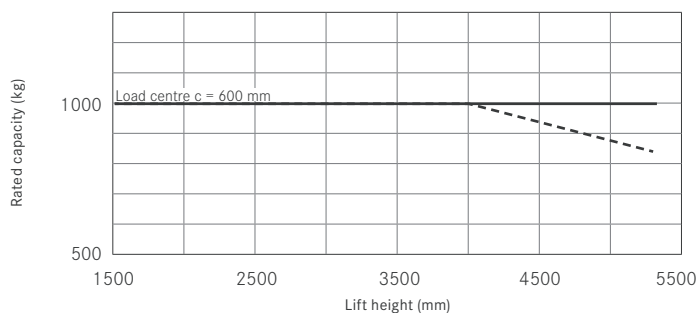
---



This specification sheet to VDI Guidelines 2198 only gives the technical figures for the standard truck.  
 Different tyres, other masts, additional equipment etc. could give different figures.

Characteristics					STILL					
					ESM 10 Single mast	ESM 10 Single mast Container	ESM 10 HiLo mast	ESM 10 HiLo mast Container	ESM 10 Triplex mast	ESM 10 Triplex mast Container
1.1	Manufacturer									
1.2	Manufacturer's model designation									
1.3	Drive				Electric					
1.4	Operation				Stand-on					
1.5	Rated capacity	Q	kg		1000					
1.6	Load centre	c	mm		600					
1.8	Load distance	x	mm		138-(196 <sup>2</sup> )					
1.9	Wheel base	y	mm		966					
Weights	2.1	Truck weight	kg		1980	1973	2083	2070	2207	2189
	2.2	Axle load front, with load	kg		2487	2480	2583	2570	2706	2688
	2.2.1	Axle load rear, with load	kg		493	493	500	500	501	501
	2.3	Axle load front, without load	kg		723	716	819	806	942	924
	2.3.1	Axle load rear, without load	kg		1257	1257	1264	1264	1265	1265
Wheels/chassis	3.1	Tyres			Polyurethane					
	3.2	Tyres size front	mm		ø 250 x 80					
	3.3	Tyres size rear	mm		ø 254 x 100					
	3.5	Number of wheels front (x = driven)			2					
	3.5.1	Number of wheels rear (x = driven)			1x					
Dimensions	3.6	Track width front	b <sub>10</sub>	mm	770					
	3.7	Track width rear	b <sub>11</sub>	mm	/					
	4.1	Tilt mast/fork carriage, forward		°	1.4					
	4.1.1	Tilt mast/fork carriage, back		°	4 <sup>1</sup>					
	4.2	Closed mast height	h <sub>1</sub>	mm	2123	2003	2178	2058	2230	2110
	4.3	Free lift	h <sub>2</sub>	mm	1580	1460	1633	1513	1685	1565
	4.4	Lift	h <sub>3</sub>	mm	1600	1480	3520	3280	5253	4893
	4.5	Extended mast height	h <sub>4</sub>	mm	2143	2023	4063	3823	5796	5436
	4.7	Height over overhead guard (cabin)	h <sub>6</sub>	mm	2120	2000	2120	2000	2120	2000
	4.8	Seat height/stand height	h <sub>7</sub>	mm	95/195					
	4.19	Overall length	l <sub>1</sub>	mm	2402-(2460 <sup>2</sup> )					
	4.20	Length incl. fork back	l <sub>2</sub>	mm	1252-(1310 <sup>2</sup> )					
	4.21	Overall width	b <sub>1</sub>	mm	850					
	4.22	Fork thickness	s	mm	40					
	4.22.1	Fork width	e	mm	80					
	4.22.2	Fork length	l	mm	1150					
	4.23	Fork carriage DIN 15173, class/form A, B			Cl. II, Form A					
	4.24	Fork carriage width	b <sub>3</sub>	mm	820	820	612	612	612	612
	4.25	External fork width	b <sub>5</sub>	mm	540-(525 <sup>1</sup> )-(584 <sup>2</sup> )					
	4.31	Ground clearance beneath mast, with load	m <sub>1</sub>	mm	63	63	48	48	48	48
4.32	Ground clearance centre wheel base	m <sub>2</sub>	mm	56						
4.33	Aisle width for pallets 800 x 1200 crossways	A <sub>st</sub>	mm	2711-(2767 <sup>2</sup> )						
4.34	Aisle width for pallets 1000 x 1200 lengthways	A <sub>st</sub>	mm	2600-(2653 <sup>2</sup> )						
4.35	Turning radius	W <sub>a</sub>	mm	1114						
Performance	5.1	Speed with load		km/h	8					
	5.1.1	Speed without load		km/h	9					
	5.2	Lift speed with load		m/s	0.17		0.16		0.16	
	5.2.1	Lift speed without load		m/s	0.27		0.26		0.25	
	5.3	Lowering speed with load		m/s	0.30					
	5.3.1	Lowering speed without load		m/s	0.30					
	5.8	Gradeability with load		%	8					
5.8.1	Gradeability without load		%	15						
5.10	Service brake			Hydraulic/mechanic						
E-motor	6.1	Drive motor, performance at S2 60 min		kW	2.2					
	6.2	Lift motor, performance at S3 15%		kW	3					
	6.3	Battery to DIN 43531/35/36 A, B, C, no			DIN 43535-B					
	6.4	Battery voltage/capacity K <sub>s</sub>		V/Ah	24/420-465					
	6.5	Battery weight (±5%)		kg	385					
	6.6	Energy consumption in accordance with VDI cycle		kWh/h	2.57					
Miscellaneous	8.1	Drive control			Electric					
	8.2	Operating pressure for attachments		bar	200					
	8.3	Oil flow for attachments		l/min	8					
	8.4	Noise level at driver's ear		dB(A)	<70					

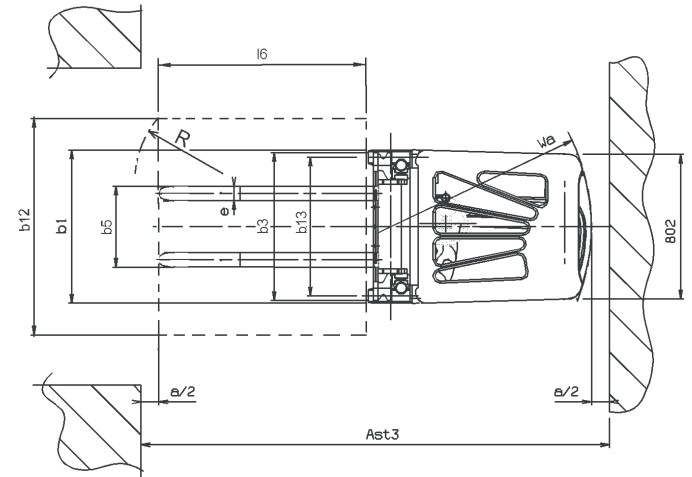
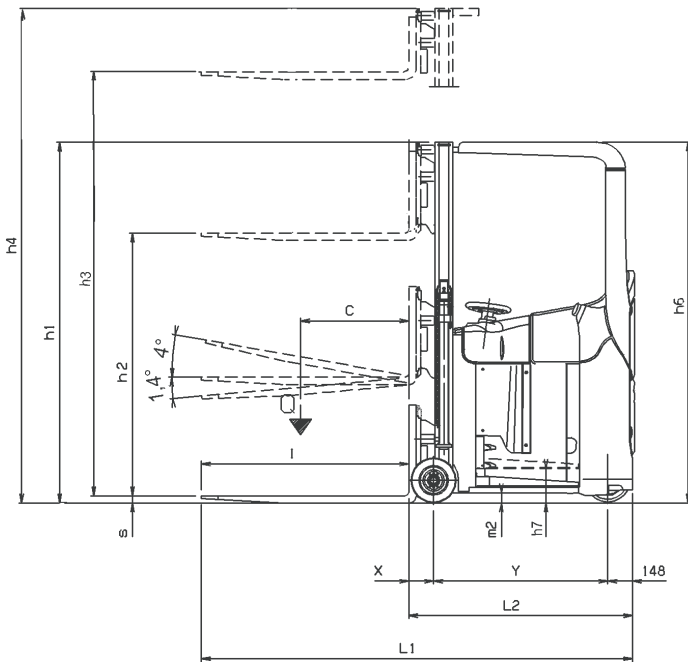
Rated basic capacity ESM 10 single mast, HiLo and triplex mast



<sup>1</sup> With optional tilting fork carriage.

<sup>2</sup> With integrated side shift.

— with standard forks, - - - with integrated side shift and standard forks.  
 Varying truck equipment may give different values.



## ESM – the agile all-round talent

The ESM electric stand-on forklift truck is an all-round talent for every internal transport job and stacking application. The ESM is especially well suited for narrow aisles and for transport jobs with frequent changes of the travel direction. With a load centre of 600 mm the ESM easily lifts 1,000 kg loads up to a height of 5,300 mm. The perfect harmony of safety, performance, comfort, compactness, dependability and service friendliness make it the ideal helper in the warehouse, for example to supply production lines, to transport goods in narrow aisles, in block storage or to load and unload lorries.

## Special characteristics

- Ergonomically designed workspace for the operator with many storage compartments.
- Progressive, digital control system for driving and lifting movements.
- Very compact chassis with rounded edges.
- Mast, chassis and overhead guard are connected to form a structural element for maximum mechanical stability.
- The controls can be parameterised according to individual customer wishes.
- Sensitive lift control with proportional valve.
- Single-piece cover for easy access to all components facilitating service and maintenance.
- Drive stand arranged sideways for best panoramic visibility.
- No straddle arms to facilitate stacking and destacking of goods and to transport closed load carriers.
- $\pm 92$  degree steering angle for extreme agility.

## Standard equipment

- 2.2 kW drive motor.
- 3.0 kW lift motor.
- Intuitive joystick control.
- Hydrostatic power steering.
- Battery change over the side.
- Combination of electric brake (rear), mechanical brake (front) and automatic parking brake.
- Adjustable working position for the driver.
- Free-view mast for lift heights up to 5,300 mm.
- Overhead guard with large windows.
- Hydraulic height-adjustment of the stand-on platform.
- Fork length: 1,150 mm.

## Special equipment

- Different mast types for lift heights up to 1,600 mm, 3,520 mm or 5,253 mm.
- High performance battery with up to 465 Ah.
- On-board charger.
- Container and cold store version.
- Low closed mast height.
- Side shift.
- Additional hydraulic functions.
- Tilting fork carriage.
- Driver restraint system.
- Load rest.
- Position indicator for drive wheel.

# STILL



STILL Materials Handling Ltd  
Aston Way  
Leyland Preston  
PR26 7UX  
Tel.: +44 (0)845 603 6827  
Fax: +44 (0)1772 454668

STILL Materials Handling Ltd  
19 Hennock Road  
Marsh Barton Trading Estate  
Exeter  
EX2 8RU  
Tel.: +44 (0)1392 435151  
Fax: +44 (0)1392 824328  
info@still.co.uk  
For further information please visit:  
[www.still.co.uk](http://www.still.co.uk)



STILL is certified in the following areas: Quality management, occupational safety, environmental protection and energy management.



first in intralogistics