

SXD and FXD N Technical Data

Double deck high lift stacker

SXD 20/Li-Ion

FXD 20 N/Li-Ion



SXD/FXD N Double deck high lift stacker
Double load - easily moved

This specification sheet, which conforms to VDI guideline 2198, provides the technical values for the standard equipment only. Different tyres, other masts, additional equipment etc. may produce different figures.



					STILL	
					SXD 20/Li-Ion	FXD 20 N/Li-Ion
Features	1.1	Manufacturer				STILL
	1.2	Manufacturer's type designation				STILL
	1.3	Drive				Electric
	1.4	Operation				Stand-on
	1.5	Rated capacity	Q	kg	2000	2000
	1.6	Load centre	C	mm	600	600
	1.8	Load distance	X	mm	860 ³	950 ³
	1.9	Wheelbase	y	mm	1780 ³	1824 ³
	Weights	2.1	Tare weight incl. battery		kg	1348 ¹
2.2		Axle load with load	drive/load end	kg	1273/2075 ¹	1318/2133 ¹
2.3		Axle load without load	drive/load end	kg	943/405	992/459
Wheels/gear	3.1	Tyres				Polyurethane
	3.2	Tyre size	drive	∅ x l	mm	254x102
	3.3	Tyre size	load end	∅ x l	mm	85x85 (2x85x60) ²
	3.4	Support roller size		∅ x l	mm	2x140x50
	3.5	No. Of wheels (x = driven)	drive/load end			1x/1/2 (1x/1/4) ²
	3.6	Track	drive/load end	b ₁₀ /b ₁₁	mm	484/380
Dimensions	4.2	Height	mast closed	h ₁	mm	See mast table
	4.3	Free lift		h ₂	mm	See mast table
	4.4	Lift		h ₃	mm	See mast table
	4.5	Height ⁴	mast raised	h ₄	mm	See mast table
	4.6	Initial lift		h ₅	mm	125
	4.7	Seat height		h ₇	mm	-
	4.15	Fork height, lowered		h ₁₃	mm	86
	4.19	Overall length		l ₁	mm	2170 ¹
	4.20	Length including forks		l ₂	mm	1020 ¹
	4.21	External width		b ₁	mm	770
	4.22	Fork dimensions		s/e/l	mm	51/180/1150
	4.23	Wheel dimensions		s/e/l	mm	76/150/1115
	4.24	Fork carriage width		b ₃	mm	710
	4.25	External fork width		b ₅	mm	560
	Performance data	4.26	Clearance between wheel arms		b ₄	mm
4.32		Ground clearance centre wheel base		m ₂	mm	20
4.34		Working aisle width with 800 x 1200 pallet lengthways		A _{st}	mm	2640 ¹
4.35		Turning radius		W _a	mm	1950
5.1		Driving speed	with/without load		km/h	10/10
5.2		Lift speed	with/without load		m/s	0.013/0.023
5.3		Lift speed, initial lift	with/without load		m/s	0.064/0.089
5.3		Lowering speed	with/without load		m/s	0.045/0.032
Motor	5.8	Lowering speed, initial lift	with/without load	m/s	0.073/0.075	
	5.8	Max. gradeability		%	20/15/13	
	5.9	Service brake				electro-magnetic
	6.1	Drive motor, capacity S2 = 60 min		kW	3.0	
	6.2	Lift motor, capacity S2 = 60 min		kW	2.3	
	6.3	Battery in accordance with DIN 43531/35/36 A, B, C, no				3PZS
Other	6.4	Battery voltage/rated capacity K _s		V/Ah	24/300 Li-Ion: 23/205	
	6.5	Battery weight ±5% (variation by manufacturer)		kg	290	
	6.6	Energy consumption in accordance with VDI cycle		kWh/h	1.01	
8.1	Drive control				AC control	
10.7	Sound pressure level (driver's ear)			dB(A)	67	
	Body vibrations: Acceleration in accordance with EN 13059			m/s ²	0.74	

¹ For 3PzS battery
² With tandem rollers
³ Initial lift lowered
⁴ With load rest + 566 mm

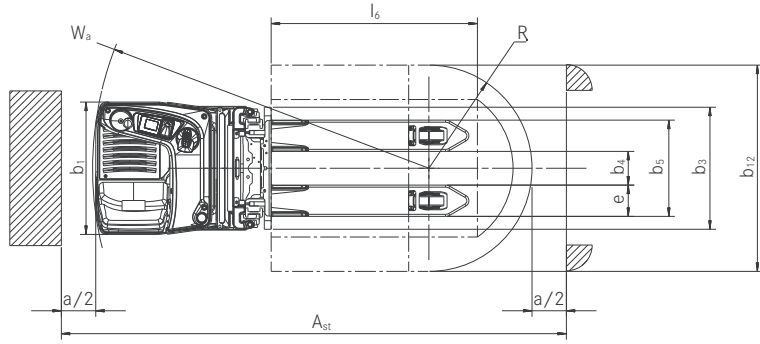
Mast Table

SXD 20			Telescopic					HiLo					
			h ₁	h ₁ '	h ₂	h ₃	h ₄	h ₁	h ₁ '	h ₂	h ₃	h ₄	
	Closed height	h ₁	mm	1240	1315	1415	1465	1515	1240	1315	1415	1465	1515
	Closed mast height with free lift	h ₁ '	mm	1315	1390	1490	1540	1590	-	-	-	-	-
	Free lift	h ₂	mm	150	150	150	150	150	720	795	895	945	995
	Lift	h ₃	mm	1574	1724	1924	2024	2124	1574	1724	1924	2024	2124
	Maximum height	h ₄	mm	2094	2244	2444	2544	2644	2094	2244	2444	2544	2644

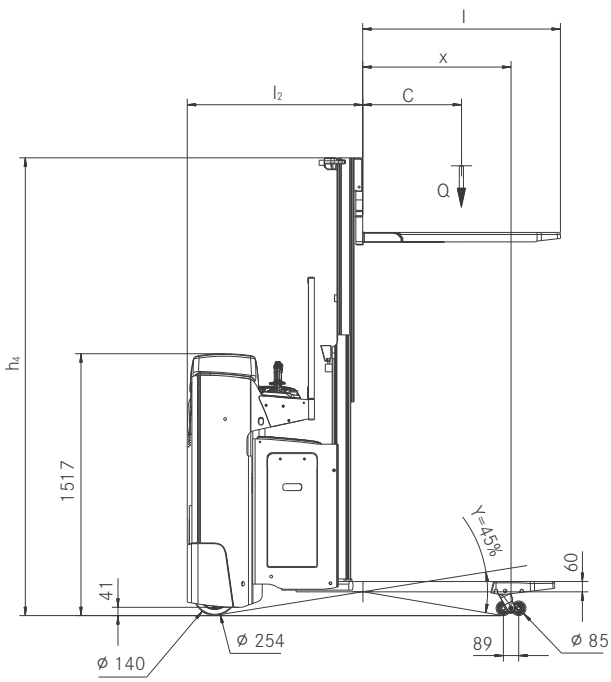
Mast Table

FXD 20 N			Telescopic		HiLo		
			h ₁	h ₁ '	h ₂	h ₃	
	Closed height	h ₁	mm	1415	1665	1415	1665
	Closed mast height with free lift	h ₁ '	mm	1490	1740	-	-
	Free lift	h ₂	mm	150	150	150	150
	Lift	h ₃	mm	1844	2344	1844	2344
	Maximum height	h ₄	mm	2364	2864	2444	2864

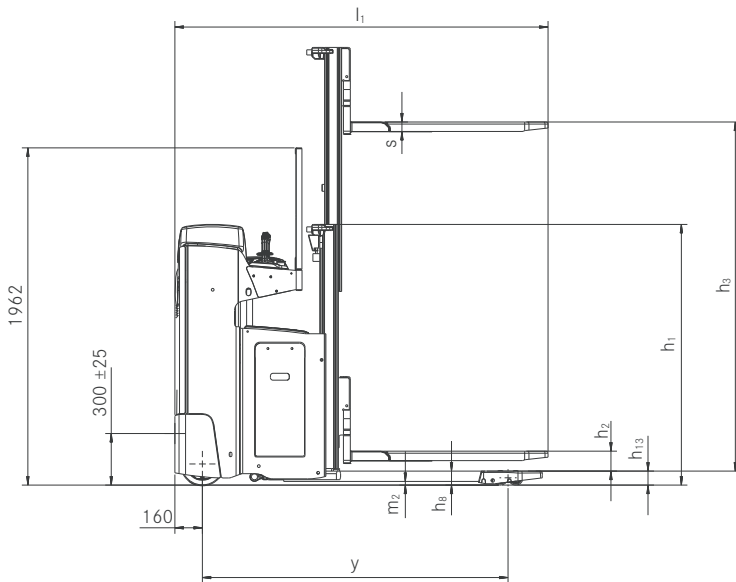
SXD Double deck high lift stacker
 Technical Drawings



Top view

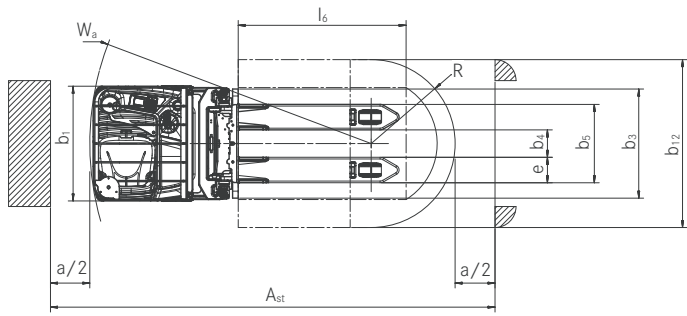


Side view

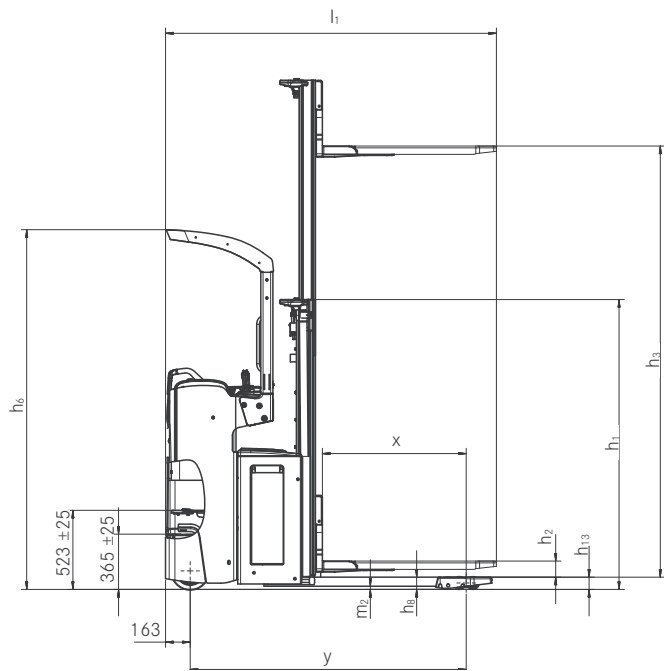


Side view

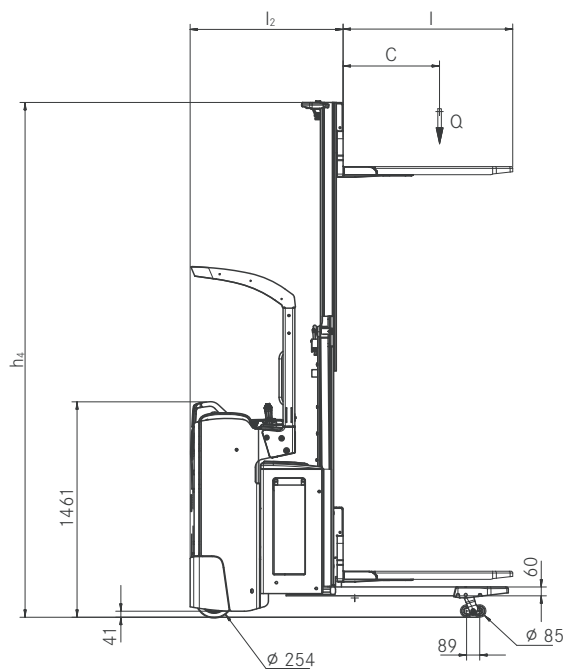
FXD N Double deck high lift stacker
 Technical Drawings



Top view



Side view



Side view

SXD Double deck high lift stacker
Detailed Photos



Steering wheel optionally on the left hand or right hand side



Also available with steering knob on the left side



Perfect visibility of the fork tips for increased pallet turnover and safety



Precise driving, lifting and lowering without changing grip with the standard joystick for fatigue free work



Also safe with two pallets: Use as double decker or high lift stacker



Available with a battery door for maximum safety in tight spaces

FXD N Double deck high lift stacker
Detailed Photos



Up to 2,000 kg load capacity and 10 km/h driving speed



Best visibility of the fork tips for high turnover and fast entering into pallets at maximum safety



Optional Joystick 4Plus for lift, lowering and drive control without changing grip



Always on the safe side thanks to the standard overhead guard



Battery change over the side as standard for highest availability and ergonomics



Optional automatic level compensation for bumpy floors and best driving characteristics

SXD/FXD N Double deck high lift stacker
Double load - easily moved



SXD/FXD N Double deck high lift stacker Double load - easily moved

Top performance: High load capacity (1.2 t) and high driving speeds (up to 10 km/h)

Powerful ramp driving to increase turnover performance and high safety thanks to the optional level compensation

Intuitive control thanks to optional placement of the control unit on the left or right hand side

The SXD is a truck for the highest requirements. The SXD makes double deck load handling, loading and unloading of lorries or horizontal transport safe and fast. It moves two standard pallets at once to any desired place fast. Also, it easily moves loads on gradients thanks to the optional level compensation. The strength of the SXD is flexibility. With the SXD as a double decker you can lift 800 kg on the mast and at the same time 1,200 kg on the initial lift. If the initial lift is not used, SXD can be used as a high-lift truck to handle up to 1,200 kg. As a high lift truck the SXD even moves up to 2,000 kg on a single pallet.

This means saving time and delivering more turnover. And more: the SXD is also an excellent tool to be used as a work table or lift platform and to feed racks. Its individuality shows in the details: The operator's workspace can be fitted with a steering wheel on the left hand or the right hand side to fulfil individual requirements. This individualisation increases safety in the warehouse because the preferred way of operation is made available. The compact dimensions allow working in tight spaces and the dampened stand-on platform round off the overall package and make the SXD a perfect helper in the warehouse.



Top performance: High load capacity (2.0 t) and high driving speeds (up to 10 km/h)

Top precision: Joystick 4Plus and free view of the fork tips

Ergonomic in every little detail: Height-adjusting foot plate and dampened seat for fatigue free work

Best availability: Battery change over the side and optional Li-Ion technology

Warehouse organisation twice as good: The double deck high-lift stacker FXD 20 N moves two pallets at once. Altogether it moves loads weighing up to 2,000 kg; 1,000 kg on the initial lift and 1,000 kg on the forks. The forks lift the pallet to over 2.30 metres. That makes FXD 20 N a perfect solution for fast transport of pressure-sensitive goods, for example foodstuff. And this high-lift truck does not only do it fast, it does it for a long time as well: Thanks to the maximum battery capacity of 500 Ah this logistics energy pack effortlessly pushes through a whole shift.

If you select the modern Lithium-ion technology and make use of short breaks for opportunity charging, the truck is even available for 24 hours. Warehouses can be tight at times, but never for the operator of the FXD 20 N which can be easily and smoothly controlled with precision even in very tight spaces. To do this, the number of turns the steering wheel needs for a 180 degree turn can be individually adjusted. Moreover, the automatic cornering speed reduction and the standard overhead guard guarantee top safety.



Extensive Equipment

Power

- Effective load handling: Driving speed up to 10 km/h
- High turnover performance thanks to double deck stacking with up to 2,000 kg load capacity
- Enough energy for multi-shift applications: High battery capacity up to 500 Ah and battery change over the side
- Full energy: Maintenance free 3-kW rotary current drive motor with 24-V technology
- Safe load transport thanks to robust drive gear with optional level compensation
- Always available: Lithium-Ion battery bundles much energy and can be quickly charged and opportunity charged
- The right programme for any situation: ECO, BOOST or Blue-Q from maximum turnover to maximum efficiency

Precision

- Precise handling of all functions without changing grip of the joystick
- Fatigue free work: Effortless and precise electric steering
- Compact and agile: Easy work in tight spaces and in narrow aisles
- Sensitive and intuitive control with proportional valve technology for lifting and lowering
- Everything in sight at all times: Display indicates battery condition, date and time

Ergonomics

- Shock absorption on bumpy floors by the dampened workplace
- Maximum operator comfort thanks to height-adjusting foot plate
- Easy control of all functions without changing grip with the Joystick 4Plus
- Ergonomic and intuitive control: Optionally available with a steering wheel or a steering knob
- Ergonomic and flexible control concept: Selectable steering wheel position on the left hand or right hand side
- Always in service: Easy access to the maintenance points and quick battery change over the side
- Individual adjustments: Adjustable steering forces and reverse steering

Compactness

- Ideal for tight spaces: Compact truck dimensions for very high agility allow optimum use of warehouse space
- High pallet turnover: Flexible use thanks to compact dimensions
- Truck widths of 770 mm and 820 mm guarantee high manoeuvrability

Safety

- High cornering safety: Curve Speed Control automatically adjusts the cornering speed to the steering angle
- High stability thanks to lift height-controlled speed reduction
- High stability on uneven floors thanks to automatic level compensation
- Safe access thanks to large step and grab handle as well as low access height
- Versatile and flexible access control with FleetManager 4.x
- Protection everywhere: The overhead guard of the FXD N increases work safety

Environmental Responsibility

- Up to seven per cent energy saving on the push of a button without obstructing performance: Blue-Q efficiency mode
- Low operation costs: Low energy consumption and long maintenance intervals
- Low noise emission due to very silent lift and drive motor
- Re-usable: Over 95 per cent of the used materials are recyclable

SXD/FXD N Double deck high lift stacker Equipment Variants



	SXD 20	FXD 20 N	
General	Impact-absorbing driver's seat	—	●
	Height-adjusting foot plate	—	●
	Impact-absorbing foot plate	●	—
	Height-adjusting back rest	●	—
	Colour display and control unit	●	●
	Integrated storage compartments	●	●
	Fully electric steering	●	●
	Fully electric steering with reverse steering	○	○
	Hydraulic controls with fixed joystick	●	●
	Hydraulic control with Joystick 4Plus	—	○
	Right-hand steering	○	—
	Steering knob left hand side	○	○
	Powerful rotary current drive motor	●	●
	Cold store version	○	○
	Accessory bar on left side, right side or both sides	○	○
	DIN A4 writing pad	○	○
	Preparation for data terminal	○	○
	Data transfer by Bluetooth or GPRS	○	○
	Low access and grab handle	●	●
	Initial lift	●	●
Mast	Tele mast	○	○
	HiLo mast	○	○
	Mast protection grid	●	●
	Polycarbonate mast screen	○	○
Tyres	Single Polyurethane rollers	●	●
	Polyurethane tandem rollers	○	○
	Lubricable Polyurethane/tandem rollers	○	○
	Polyurethane drive wheel	●	●
	Threaded Polyurethane drive wheel	○	○
	Polyurethane drive wheel, soft	○	○
	Solid rubber drive wheel	○	○
Threaded solid rubber drive wheel	○	○	
Safety	Automatic level compensation	○	○
	Access (key)	●	●
	Access (Digicode)	○	○
	FleetManager access (Digicode)	○	○
	FleetManager access (STILL chip/customer card/customer chip)	○	○
	FleetManager: Shock detect	○	○
	Curve Speed Control: Cornering speed reduction	●	●
	Lift height controlled speed reduction	●	●
	Speed limit to 8 km/h	○	○
	Load backrest	○	○
Overhead guard	—	●	
Battery	Battery change over the side by roller track	○	●
	Battery compartment for battery capacity up to 375 Ah	●	●
	Battery compartment for battery capacity up to 500 Ah	○	○
	Li-Ion battery 205 Ah	○	○
	Li-Ion battery 410 Ah	○	○

● Standard ○ Optional — Not available

STILL



STILL Materials Handling Ltd
Aston Way
Leyland Preston
PR26 7UX
Tel.: +44 (0)845 603 6827

STILL Materials Handling Ltd
Jacks Way
Hill Barton
Business Park
Clyst St. Mary
Exeter
EX5 1FG
Tel.: +44 (0)345 603 6827

info@still.co.uk

For further information please visit:

www.still.co.uk



STILL is certified in the following areas: Quality management, occupational safety, environmental protection and energy management.



first in intralogistics